

D58-3273 – PROPOSED TRAFFIC ORDER

NEATH PORT TALBOT COUNTY BOROUGH COUNCIL
CYNGOR BWRDEISTREF SIROL CASTELL-NEDD PORT TALBOT

(A4109 MAIN ROAD, DULAIS DRIVE AND
FFOREST HILL, ABERDULAIS, NEATH)
(REVOCAION) (PROHIBITION OF WAITING, LOADING
AND UNLOADING AT ANY TIME) (LIMITED WAITING)
AND (DISABLED BADGE HOLDERS ONLY)

ORDER 2026

STATEMENT OF REASON

The Order is necessary to prevent indiscriminate parking in the interest of road safety.

NEATH PORT TALBOT COUNTY BOROUGH COUNCIL
CYNGOR BWRDEISTREF SIROL CASTELL-NEDD PORT TALBOT

(A4109 MAIN ROAD, DULAIS DRIVE AND
FFOREST HILL, ABERDULAIS)

(REVOCAATION), (NO WAITING, LOADING AND UNLOADING
AT ANY TIME) (LIMITED WAITING) AND
(DISABLED BADGE HOLDERS ONLY)

ORDER 2026

NOTICE is given that the Council intends to make an Order under Sections 1, 2, 32, 35, 45 and Part IV of Schedule 9 of the Road Traffic Regulation Act 1984 (hereinafter referred to as “the Act of 1984”) and of all other powers them enabling and after consultation with the Chief Officer of Police in accordance with Part III of Schedule 9 of the Act of 1984, the effect of which is as set out in the Schedule below.

A copy of the draft Order, plan and statement of reasons can be inspected on the Council’s Internet Website <https://www.npt.gov.uk/traffic-regulation-orders-tros>.

Any objections should be submitted in writing, setting out the reasons thereof, to reach the Head of Engineering and Transport, The Quays, Baglan Energy Park SA11 2GG by 23rd July 2026.

If you have any further enquiries regarding this notice, please send your email to: environment@npt.gov.uk

SCHEDULES

Schedule 1 – Revocation

Neath Port Talbot County Borough Council (Ffynnon Dawel, Dulais Drive, Fforest Hill And Main Road, Aberdulais, Neath) (Prohibition Of Waiting At Any Time) Order 2013

Dulais Drive, Aberdulais - North Side

From its junction with Main Road, Aberdulais for a distance of approximately 33 metres in a westerly direction.

Dulais Drive, Aberdulais - South Side

From its junction with Main Road, Aberdulais for a distance of approximately 30 metres in a westerly direction.

Fforest Hill, Aberdulais - North West Side

From its junction with Main Road, Aberdulais for a distance of approximately 52 metres in a north easterly direction then 39 metres in a westerly direction then 16 metres in a northerly direction.

Fforest Hill, Aberdulais - South East Side

From its junction with Main Road, Aberdulais is for a distance of approximately 17 metres in a north easterly direction.

Main Road Aberdulais - North West Side

From its junction with Fforest Hill, Aberdulais for a distance of approximately 16 metres in a north easterly direction.

Neath Port Talbot County Borough Council (Main Road, Aberdulais, Neath) (Limited Waiting, Monday To Saturday, 8am To 6pm, 3 Hours No Return Within 3 Hours) Order 2017

Neath Port Talbot County Borough Council (Fforest Hill, Aberdulais) (Prohibition Of Waiting At Any Time) Order 2020

Schedule 2 – Prohibition of Waiting, Loading and Unloading at any Time

2.1 A4109 Main Road, Aberdulais (North West Side)

From its junction with Dulais Drive for a distance of approximately 7 metres in a south westerly direction.

2.2 A4109 Main Road, Aberdulais (North West Side)

From a point approximately 48 metres in a south westerly direction from its junction with Dulais Drive for a distance of approximately 20 metres in a south westerly direction.

2.3 A4109 Main Road, Aberdulais (North West Side)

From its junction with Fforest Hill for a distance of approximately 16 metres in a north easterly direction.

2.4 A4109 Main Road, Aberdulais (South East Side)

From a point approximately 16 metres in a north easterly direction opposite its junction with Fforest Hill, extending for a distance of approximately 45 metres in a south westerly direction.

2.5 A4109 Main Road, Aberdulais (South East Side)

From a point approximately 48 metres in a south westerly direction opposite its junction with Dulais Drive, extending for a distance of approximately 12 metres in a south westerly direction.

2.6 Dulais Drive, Aberdulais (North Side)

From its junction with the A4109 Main Road for a distance of approximately 48 metres in a westerly direction.

2.7 Dulais Drive, Aberdulais (South Side)

From its junction with the A4109 Main Road for a distance of approximately 42 metres in a westerly direction.

2.8 Fforest Hill, Aberdulais (North West, South and West Sides)

From its junction with A4109 Main Road for a distance of approximately 52 metres in a north easterly direction, then approximately 40 metres in a westerly direction, then approximately 16 metres in a northerly direction.

2.9 Fforest Hill, Aberdulais (South East, North and East Sides)

From its junction with the A4109 Main Road extending approximately 50 metres in a north easterly direction, then approximately 46 metres in a westerly direction, and then approximately 22 metres in a northerly direction.

Schedule 3 – Limited Waiting, Monday to Saturday 8AM to 6PM, 3 hours No Return within 3 hours.

3.1 A4109 Main Road, Aberdulais (North West Side)

From a point approximately 138 metres in a south westerly direction from its junction with Dulais Drive, extending for a distance of approximately 70 metres in a south westerly direction.

Schedule 4 - Disabled Badge Holders Only, Monday To Saturday, 8am To 6pm, 3 Hours, No Return Within 3 Hours

4.1 A4109 Main Road, Aberdulais (North West Side)

From a point approximately 208 metres in a south westerly direction from its junction with Dulais Drive, extending for a distance of approximately 16 metres in a south westerly direction.

DATED 2nd JULY 2026

M C GRIFFITHS

CHIEF LEGAL OFFICER

NEATH PORT TALBOT COUNTY BOROUGH COUNCIL
CYNGOR BWRDEISTREF SIROL CASTELL-NEDD PORT TALBOT

(A4109 MAIN ROAD, DULAIS DRIVE AND
FFOREST HILL, ABERDULAIS)

(REVOCAATION), (NO WAITING, LOADING AND UNLOADING
AT ANY TIME) (LIMITED WAITING)
AND (DISABLED BADGE HOLDERS ONLY)

ORDER 2026

The Neath Port Talbot County Borough Council in exercise of their powers under Sections 1, 2, 32, 35, 45 and Part IV of Schedule 9 of the Road Traffic Regulation Act 1984 (hereinafter referred to as “the Act of 1984”) and of all other powers them enabling and after consultation with the Chief Officer of Police in accordance with Part III of Schedule 9 of the Act of 1984 hereby make the following Order: -

1. This Order shall come into force on the day of 2026 and may be cited as the “Neath Port Talbot County Borough Council (A4109 Main Road, Dulais Drive and Fforest Hill, Aberdulais) (Revocation) (No Waiting, Loading and Unloading at any Time) (Limited Waiting) and (Disabled Badge Holders Only) Order 2026”.

2. (1) In this Order –

“Disabled Person’s Vehicle” has the same meaning as in The Local Authorities’ Traffic Orders (Exemptions for Disabled Persons) (Wales) Regulations 2000;

“Disabled Person’s Badge” has the same meaning as in The Disabled Person’s (Badges for Motor Vehicles) (Wales) (Amended) Regulations 2000;

“Relevant Position” has the same meaning as in the Disabled Persons (Badges for Motor Vehicles) (Wales) (Amended) Regulations 2000”;

“Public Service Vehicle” shall have the same meaning as in Section 1 of the Public Passenger Vehicles Act 1981 and “local service” shall have the same meaning as in Section 1 of the Transport Act 1985;

“Universal Providers” means those operators of postal services who are licensed to provide all or part of a Universal Postal Service under the provisions contained in the Postal Services Act 2000.

- (2) Except where otherwise stated, any reference in this Order to a numbered Article or Schedule is a reference to the Article or Schedule bearing that number in this Order.
 - (3) The Interpretation Act 1978 shall apply for the interpretation of this Order as it applies for the Interpretation of an Act of Parliament.
3. The provisions contained in Neath Port Talbot County Borough Council (Ffynnon Dawel, Dulais Drive, Fforest Hill and Main Road, Aberdulais, Neath) (Prohibition of Waiting at any Time) Order 2013 are hereby revoked only in so far as they relate to the sides of lengths of roads as set out in Schedule 1 to this Order.
 4. The Neath Port Talbot County Borough Council (Main Road, Aberdulais, Neath) (Limited Waiting, Monday to Saturday, 8AM to 6PM, 3 hours No Return Within 3 hours) Order 2017 is hereby revoked in its entirety.
 5. The Neath Port Talbot County Borough Council (Fforest Hill, Aberdulais) (Prohibition of Waiting at Any Time) Order 2020 is hereby revoked in its entirety.
 6. Save as provided in Articles 10 and 12 of this Order no person except on the direction of a Police Constable in uniform or of a Parking Attendant shall cause or permit any vehicle to wait at any time on the lengths of sides of road as set out in the Schedule 2 to this Order.
 7. Save as provided in Articles 9, 10, 11 and 12 of this Order, no person except on the direction of a Police Constable in uniform or a Parking Attendant shall cause or permit any vehicle to wait for more than 3 hours or to return within 3 hours to the same length of side of road on which that period of waiting began, between the hours of 8am and 6pm, Monday to Saturday as set out in Schedule 3 to this Order.
 8. Save as provided in Articles 10 and 12 of this Order, no person except on the direction of a Police Constable in uniform or a Parking Attendant shall cause or permit any vehicle to park for more than 3 hours, or to return within 3 hours to the same length of side of road on which that period of waiting began, between the hours of 8am and 6pm, Monday to Saturday in the Disabled Parking Place designated in Schedule 4 to this

Order, unless that vehicle is a Disabled Person Vehicle which displays in the relevant position a Disabled Person Badge.

9. Nothing in Article 7 of this Order shall render it unlawful to cause or permit a disabled person's vehicle which displays in the relevant position a disabled person's badge to wait on the lengths of sides of road referred to in the said Article.
10. Nothing in Article 6, 7 and 8 of this Order shall render it unlawful to cause or permit any vehicle to wait on the length of side of road specified therein for so long as may be necessary to enable: -
 - (A) A person to board or alight from a vehicle;
 - (B) The vehicle, if it cannot conveniently be used for such purpose in any other road, to be used in connection with any of the following operations, namely: -
 - (i) Building, industrial or demolition operations;
 - (ii) The removal of any obstruction to traffic;
 - (iii) The laying, erection, alteration or repair in or on land adjacent to the said lengths of sides of road of any sewer or any main pipe or apparatus for the supply of gas, water or electricity or any telecommunications apparatus defined in the Telecommunications Act 1984;
 - (C) The vehicle, if it cannot conveniently be used for such purpose in any other road, to be used in the service of a Local Authority or a Water Authority in pursuance of statutory powers or duties;
 - (D) The vehicle to be used by a Universal Service Provider for the purpose of delivering or collecting postal packets;
 - (E) Public Service Vehicles operating a local service when waiting at an authorised bus stop to set down or pick up passengers, or to school buses;
 - (F) The vehicle to take in petrol, oil, water or air from any garage situated on or adjacent to the said length of road.
11. Nothing in Article 7 of this Order shall render it unlawful to cause or permit any vehicle to wait on the length of side of road specified therein

for so long as may be necessary to enable goods to be loaded and unloaded from the vehicle.

12. The prohibitions imposed by Articles 6, 7 and 8 of this Order shall not apply to Police, Fire, Ambulance or other Emergency Service vehicles or to Local Authority vehicles when in pursuance of statutory duties or powers.

SCHEDULES

Schedule 1 – Revocation

Neath Port Talbot County Borough Council (Ffynnon Dawel, Dulais Drive, Fforest Hill and Main Road, Aberdulais, Neath) (Prohibition of Waiting at any Time) Order 2013

Dulais Drive, Aberdulais - North Side

From its junction with Main Road, Aberdulais for a distance of approximately 33 metres in a westerly direction.

Dulais Drive, Aberdulais - South Side

From its junction with Main Road, Aberdulais for a distance of approximately 30 metres in a westerly direction.

Fforest Hill, Aberdulais - North West Side

From its junction with Main Road, Aberdulais for a distance of approximately 52 metres in a north easterly direction then 39 metres in a westerly direction then 16 metres in a northerly direction.

Fforest Hill, Aberdulais - South East Side

From its junction with Main Road, Aberdulais is for a distance of approximately 17 metres in a north easterly direction.

Main Road Aberdulais - North West Side

From its junction with Fforest Hill, Aberdulais for a distance of approximately 16 metres in a north easterly direction.

Schedule 2 – Prohibition of Waiting, Loading and Unloading at any Time

2.1 A4109 Main Road, Aberdulais (North West Side)

From its junction with Dulais Drive for a distance of approximately 7 metres in a south westerly direction.

2.2 A4109 Main Road, Aberdulais (North West Side)

From a point approximately 48 metres in a south westerly direction from its junction with Dulais Drive for a distance of approximately 20 metres in a south westerly direction.

2.3 A4109 Main Road, Aberdulais (North West Side)

From its junction with Fforest Hill for a distance of approximately 16 metres in a north easterly direction.

2.4 A4109 Main Road, Aberdulais (South East Side)

From a point approximately 16 metres in a north easterly direction opposite its junction with Fforest Hill, extending for a distance of approximately 45 metres in a south westerly direction.

2.5 A4109 Main Road, Aberdulais (South East Side)

From a point approximately 48 metres in a south westerly direction opposite its junction with Dulais Drive, extending for a distance of approximately 12 metres in a south westerly direction.

2.6 Dulais Drive, Aberdulais (North Side)

From its junction with the A4109 Main Road for a distance of approximately 48 metres in a westerly direction.

2.7 Dulais Drive, Aberdulais (South Side)

From its junction with the A4109 Main Road for a distance of approximately 42 metres in a westerly direction.

2.8 Fforest Hill, Aberdulais (North West, South and West Sides)

From its junction with A4109 Main Road for a distance of approximately 52 metres in a north easterly direction, then approximately 40 metres in a westerly direction, then approximately 16 metres in a northerly direction.

2.9 Fforest Hill, Aberdulais (South East, North and East Sides)

From its junction with the A4109 Main Road extending approximately 50 metres in a north easterly direction, then approximately 46 metres in a westerly direction, and then approximately 22 metres in a northerly direction.

**Schedule 3 – Limited Waiting, Monday to Saturday 8AM to 6PM, 3 Hours
No Return within 3 Hours.**

3.1 A4109 Main Road, Aberdulais (North West Side)

From a point approximately 138 metres in a south westerly direction from its junction with Dulais Drive, extending for a distance of approximately 70 metres in a south westerly direction.

Schedule 4 - Disabled Badge Holders Only, Monday To Saturday, 8am To 6pm, 3 Hours No Return Within 3 Hours

4.1 A4109 Main Road, Aberdulais (North West Side)




From a point approximately 208 metres in a south westerly direction from its junction with Dulais Drive, extending for a distance of approximately 16 metres in a south westerly direction.

THE COMMON SEAL of)
THE COUNCIL was hereunto)
affixed on this day of)
2026 in the presence of: -)

PROPER OFFICER

1. All dimensions are in millimetres unless otherwise stated.
2. Ordnance Survey Licence:
© Crown Copyright and Database Right 2013. Ordnance Survey 100023392.
© Hawlfraint a hawilau cronfa ddata'r goron 2013. Rhid trwydded yr arolwg ordnans 100023392.

KEY

-  Proposed No Waiting, No Loading and Unloading at any time traffic order
-  Proposed Limited Waiting, Monday to Saturday, 8am to 6pm for 3 hours
-  Proposed Disabled Badge Holders Only Parking, Monday to Saturday, 8am to 6pm for 3 hours

| | | | | | |
|-----|---------|----|----|----|------|
| Rev | Details | Dr | Ch | Ap | Date |
| | | | | | |

Client

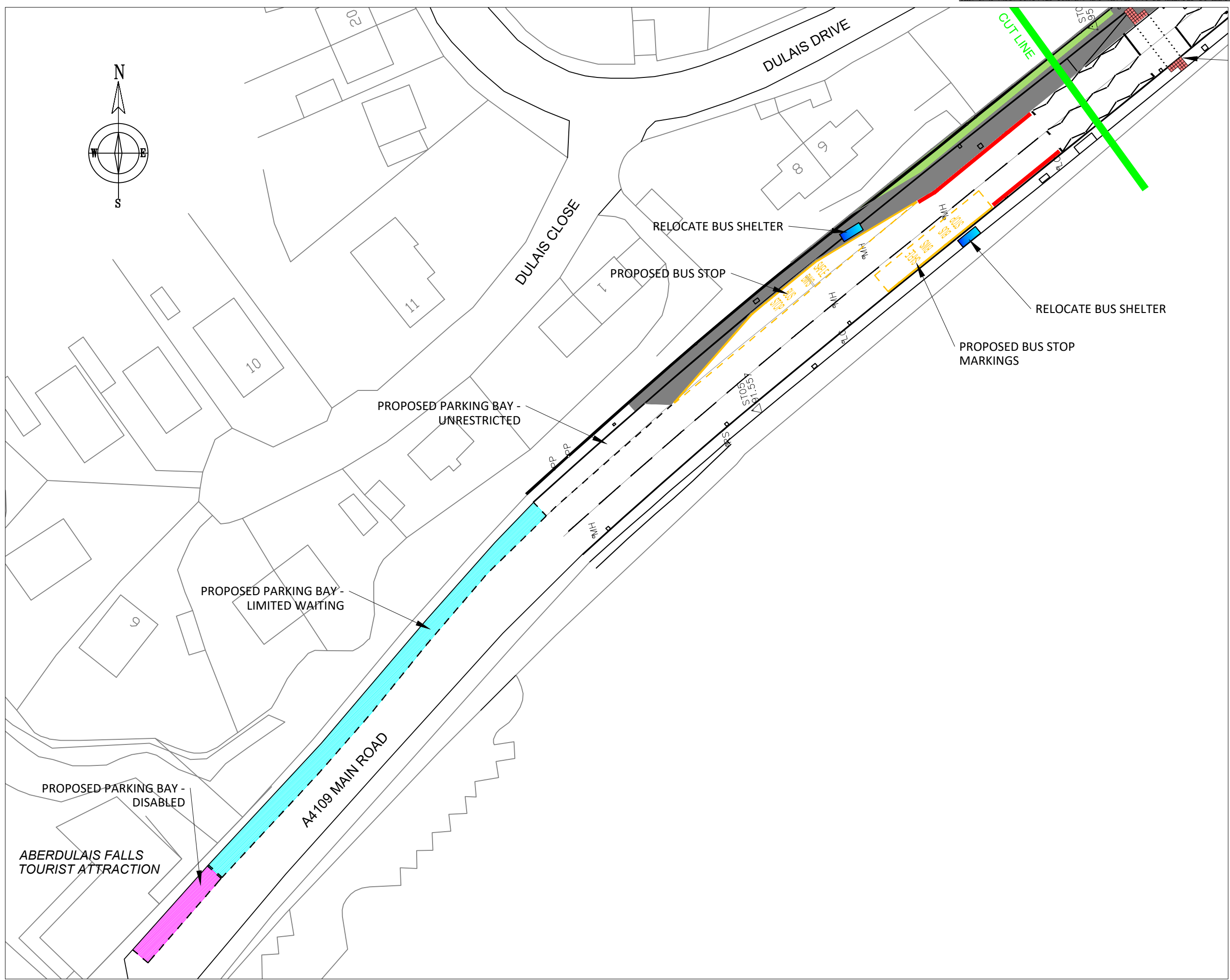
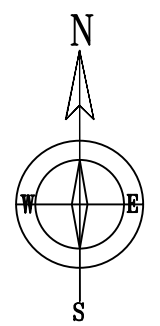


ENGINEERING AND TRANSPORT
NICOLA PEARCE
DIRECTOR OF ENVIRONMENT AND REGENERATION
THE QUAYS, BRUNEL WAY
BAGLAN ENERGY PARK
NEATH SA11 2GG

Job Title
**ROAD SAFETY GRANT 2026 / 2027
DULAIS DRIVE, ABERDULAIS
PROPOSED TRAFFIC ORDERS**

| | |
|--------------------|----------------------------------------|
| File No. | Financial Code No. |
| Drawn JBK | Checked MCB Approved FHH |
| Date May'26 | Date May'26 Date May'26 |

Scales 1:500
Drawing No. **C16900-TRO1.1**




Drw. No.

Job Title


- 1. All dimensions are in millimetres unless otherwise stated.
- 2. Ordnance Survey Licence: © Crown Copyright and Database Right 2013. Ordnance Survey 100023392. © Hawlfraint a hawilau cronfa ddata'r goron 2013. Rhid trwydded yr arolwg ordnans 100023392.

KEY

 Proposed No Waiting, No Loading and Unloading at any time traffic order

| | | | | | |
|-----|---------|----|----|----|------|
| Rev | Details | Dr | Ch | Ap | Date |
| | | | | | |

Client



ENGINEERING AND TRANSPORT

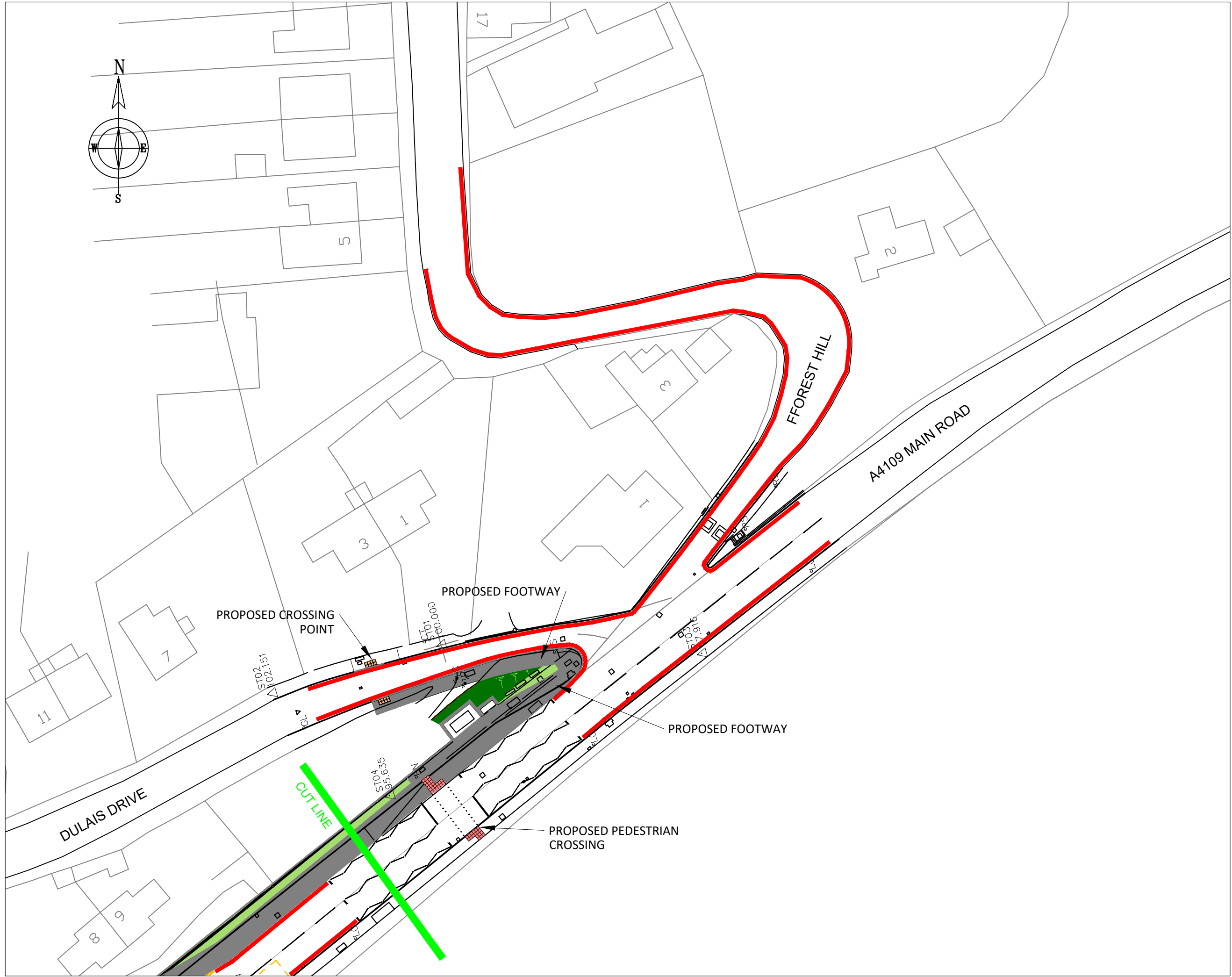
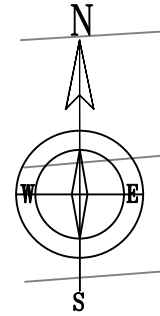
NICOLA PEARCE
DIRECTOR OF ENVIRONMENT AND REGENERATION
THE QUAYS, BRUNEL WAY
BAGLAN ENERGY PARK
NEATH SA11 2GG

Job Title

**ROAD SAFETY GRANT 2026 / 2027
DULAIS DRIVE, ABERDULAIS
PROPOSED TRAFFIC ORDERS**

| | |
|--------------------|----------------------------------------|
| File No. | Financial Code No. |
| Drawn JBK | Checked MCB Approved HHH |
| Date May'26 | Date May'26 Date May'26 |
| Scales | 1:500 |

Drawing No. **C16900-TRO1.2**



Dwg. No.

Job Title