

D58-3267 – PROPOSED TRAFFIC ORDER
NEATH PORT TALBOT COUNTY
BOROUGH COUNCIL
(PONTNEATHVAUGHAN ROAD AND
HIGH STREET, GLYNNEATH)
(REVOCAION) (PROHIBITION OF WAITING, LOADING
AND UNLOADING AT ANY TIME)
(PROHIBITION OF WAITING AT ANY TIME) AND
(LIMITED WAITING)

ORDER 2026

STATEMENT OF REASON

The order is necessary to prevent indiscriminate parking interest of road safety and encourage the use of the pay and display car park as opposed to parking on the classified road.

NEATH PORT TALBOT COUNTY BOROUGH COUNCIL
CYNGOR BWRDEISTREF SIROL CASTELL-NEDD PORT TALBOT

(PONTNEATHVAUGHAN ROAD AND HIGH STREET, GLYNNEATH)
(REVOCATION) (PROHIBITION OF WAITING, LOADING AND
UNLOADING AT ANY TIME) (PROHIBITION OF WAITING AT
ANY TIME) AND (LIMITED WAITING)

ORDER 2026

NOTICE is given that the Council intends to make an Order under Sections 1, 2 and Part IV of Schedule 9 of the Road Traffic Regulation Act 1984 (hereinafter referred to as “the Act of 1984”) and of all other powers them enabling and after consultation with the Chief Officer of Police in accordance with Part III of Schedule 9 of the Act of 1984, the effect of which is as set out in the Schedule below.

A copy of the draft Order, plan and statement of reasons can be inspected on the Council’s Internet Website <https://www.npt.gov.uk/traffic-regulation-orders-tros>.

Any objections should be submitted in writing, setting out the reasons thereof, to reach the Head of Engineering and Transport, The Quays, Baglan Energy Park SA11 2GG by 2nd June 2026.

If you have any further enquiries regarding this notice, please send your email to: environment@npt.gov.uk.

SCHEDULES

Schedule 1 - Revocations

- 1.1** Any existing Orders are hereby revoked only in so far as they relate to the sides and lengths of roads set out in Schedule’s 2, 3 and 4 of this Order.
- 1.2** Neath Port Talbot County Borough Council (B4242 Pontneathvaughan Road and High Street, Pontneddfechan, Glynneath) (revocation) (prohibition of waiting loading and unloading at any time) and (prohibition of waiting on footway at any time) Order 2023.
- 1.3** Neath Port Talbot County Borough Council (B4242 Pontneathvaughan Road, Glynneath) (prohibition of waiting at any time) and (prohibition of waiting on footway at any time) Order 2019.

Schedule 2 - Prohibition of Waiting, Loading and Unloading at Any Time

- 2.1 B4242 Pontneathvaughan Road, Glynneath (North West Side)**
From the County Boundary for a distance of approximately 110 metres in a south westerly direction.
- 2.2 B4242 Pontneathvaughan Road, Glynneath (North West Side)**
From a point approximately 272 metres south west of the western kerbline of High Street to a point approximately 287 metres south west of the western kerbline of High Street, a distance of approximately 15 metres in a south westerly direction.
- 2.3 B4242 Pontneathvaughan Road, Glynneath (North West Side)**
From a point approximately 305 metres south west of the western kerbline of High Street to a point approximately 397 metres south west of the western kerbline of High Street, a distance of approximately 92 metres in a south westerly direction.
- 2.4 B4242 Pontneathvaughan Road, Glynneath (North West Side)**
From a point approximately 412 metres south west of the western kerbline of High Street to a point approximately 427 metres south west of the western kerbline of High Street, a distance of approximately 15 metres in a south westerly direction.
- 2.5 B4242 Pontneathvaughan Road, Glynneath (North West Side)**
From a point approximately 529 metres south west of the western kerbline of High Street to a point approximately 544 metres south west of the western kerbline of High Street, a distance of approximately 15 metres in a south westerly direction.
- 2.6 B4242 Pontneathvaughan Road, Glynneath (North West Side)**
From a point approximately 560 metres south west of the western kerbline of High Street to a point approximately 575 metres south west of the western kerbline of High Street, a distance of approximately 15 metres in a south westerly direction.
- 2.7 B4242 Pontneathvaughan Road, Glynneath (South East Side)**
From a point opposite and in line with the eastern kerbline of High Street to a point approximately 40 metres east thereof to the County Boundary.
- 2.8 B4242 Pontneathvaughan Road, Glynneath (South East Side)**
From a point opposite and in line with the eastern kerbline of High Street to a point approximately 225 metres south west thereof

2.9 B4242 Pontneathvaughan Road, Glynneath (South East Side)

From a point approximately 370 metres west of a point opposite and in line with the eastern kerblines of High Street to a point approximately 605 metres west of a point opposite and in line with the eastern kerblines of High Street, a distance of approximately 235 metres in a south westerly direction

2.10 High Street, Glynneath (East Side)

From its junction with the northern kerblines of B4242 Pontneathvaughan Road to a point approximately 10 metres north thereof.

2.11 High Street, Glynneath (East Side)

From a point approximately 27 metres north of its junction with the northern kerblines of B4242 Pontneathvaughan Road to a point approximately 57 metres north and then east of its junction with the northern kerblines of B4242 Pontneathvaughan Road to the County Boundary, a distance of approximately 30 metres in a north and then easterly direction.

2.12 High Street, Glynneath (West Side)

From its junction with the north western kerblines of B4242 Pontneathvaughan Road to its junction with the southern kerblines of B4242 Pontneathvaughan Road link to High Street, a distance of approximately 27 metres in a northerly direction.

2.13 High Street, Glynneath (West Side)

From its junction with the northern kerblines of B4242 Pontneathvaughan Road link to High Street to a point approximately 36 metres north and then east thereof, to the County Boundary.

2.14 B4242 Pontneathvaughan Road Link To High Street, Glynneath (North Side)

From its junction with the western kerblines of High Street to a point approximately 6 metres west thereof.

2.15 B4242 Pontneathvaughan Road Link To High Street, Glynneath (South Side)

From its junction with the western kerblines of High Street to a point approximately 3 metres west thereof.

Schedule 3 – Prohibition of Waiting At Any Time

3.1 B4242 Pontneathvaughan Road, Glynneath (North West Side)

High Street to a point approximately 112 metres south west of the western kerblines of High Street, a distance of approximately 50 metres in a south westerly direction.

3.2 B4242 Pontneathvaughan Road, Glynneath (North West Side)

From a point approximately 136 metres south west of the western kerblines of High Street to a point approximately 272 metres south west of the western kerblines of High Street, a distance of approximately 136 metres in a south westerly direction.

Schedule 4 – Limited Waiting 3 hours, No Return Within 3 hours, 7AM to 11PM, Resident Permit Holders Exempt

4.1 B4242 Pontneathvaughan Road, Glynneath (South East Side)

From a point approximately 225 metres west of a point opposite and in line with the eastern kerblines of High Street to a point approximately 370 metres west of a point opposite and in line with the eastern kerblines of High Street, a distance of approximately 145 metres in a south westerly direction.

DATED 12th MAY 2026

M C GRIFFITHS

CHIEF LEGAL OFFICER

NEATH PORT TALBOT COUNTY BOROUGH COUNCIL
CYNGOR BWRDEISTREF SIROL CASTELL-NEDD PORT TALBOT

(B4242 PONTNEATHVAUGHAN ROAD AND HIGH STREET,
PONTNEATHVAUGHAN, GLYNNEATH)
(REVOCATION) (PROHIBITION OF WAITING, LOADING
AND UNLOADING AT ANY TIME) (PROHIBITION OF
WAITING AT ANY TIME) AND (LIMITED WAITING)

ORDER 2026

The Neath Port Talbot County Borough Council in exercise of their powers under Sections 1, 2 and Part IV of Schedule 9 of the Road Traffic Regulation Act 1984 (hereinafter referred to as “the Act of 1984”) and of all other powers them enabling and after consultation with the Chief Officer of Police in accordance with Part III of Schedule 9 of the Act of 1984 hereby make the following Order:-

1. This Order shall come into force on the day of 2026 and may be cited as the “Neath Port Talbot County Borough Council (B4242 Pontneathvaughan Road and High Street, Pontneathvaughan, Glynneath) (Revocation) (Prohibition of Waiting Loading and Unloading At Any Time) (Prohibition of Waiting at any Time) and (Limited Waiting) Order 2026”.

2. (1) In this Order –

“Disabled Person’s Vehicle” has the same meaning as in The Local Authorities’ Traffic Orders (Exemptions for Disabled Persons) (Wales) (Amended) Regulations 2000;

“Disabled Persons Badge” has the same meaning as in The Disabled Persons (Badges for Motor Vehicles) (Wales) (Amended) Regulations 2000;

“Parking Disc” means a parking disc issued by a Local Authority, capable of showing the quarter hour period during which a period of waiting begins;

“Relevant Position” has the same meaning as in The Disabled Persons (Badges for Motor Vehicles) (Wales) (Amended) Regulations 2000;

“Public Services Vehicle” shall have the same meaning as in Section 1 of the Public Passenger Vehicles Act 1981 and “local service” shall have the same meaning as in Section 1 of the Transport Act 1985;

“Universal Service Providers” means those operators of postal services who are licensed to provide all or part of a Universal Postal Service under the provisions contained in the Postal Services Act 2000.

- (2) Except where otherwise stated, any reference in this Order to a numbered Article or Schedule is a reference to the Article or Schedule bearing that number in this Order.
 - (3) The Interpretation Act 1978 shall apply for the interpretation of this Order as it applies for the Interpretation of an Act of Parliament.
3. Any existing Orders are hereby revoked only in so far as they relate to the sides and lengths of roads set out in Schedule’s 1, 2 and 3 of this Order.
 4. The provisions contained in the Neath Port Talbot County Borough Council (B4242 Pontneathvaughan Road and High Street, Pontneddfechan, Glynneath) (revocation) (prohibition of waiting loading and unloading at any time) and (prohibition of waiting on footway at any time) Order 2023 are hereby revoked.
 5. The provisions contained in the Neath Port Talbot County Borough Council (B4242 Pontneathvaughan Road, Glynneath) (prohibition of waiting at any time) and (prohibition of waiting on footway at any time) Order 2019 are hereby revoked.
 6. Save as provided in Articles 10 and 12 of this Order, no person except on the direction of a Police Constable in uniform or a Parking Attendant shall cause or permit any vehicle to wait, load or unload at any time on the lengths of sides of roads set out in Schedule 1 of this Order.
 7. Save as provided in Articles 9, 10, 11 and 12 of this Order no person except on the direction of a Police Constable in uniform or of a Parking

Attendant shall cause or permit any vehicle to wait at any time on the length of side of road as set out in the Schedule 2 of this Order.

8. Save as provided in Articles 10, 11, 12, 13 and 14 of this Order, no person except on the direction of a Police Constable in uniform or a Parking Attendant shall cause or permit any vehicle to wait for more than 3 hours or to return within 3 hours to the same length of side of road on which that period of waiting began between the hours of 7am and 11pm, Monday to Saturday on the length of side of road set out in the Schedule 3 to this Order.
9. Nothing in Article 7 of this Order shall render it unlawful to cause or permit a Disabled Person's Vehicle which displays in the relevant position a Disabled Person's Badge and a parking disc (on which the driver, or other person in charge of the vehicle, has marked the time at which the period of waiting began) to wait on the lengths of sides of roads referred to in the Article for a period not exceeding 3 hours (not being a period separated by an interval of less than 1 hour from a previous period of waiting by the same vehicle on the same length of side of road on which that vehicle had previously been waiting).
10. Nothing in Article 6, 7 and 8 of this Order shall render it unlawful to cause or permit any vehicle to wait on the lengths of sides of roads specified therein for so long as may be necessary to enable: -
 - (A) A person to board or alight from a vehicle;
 - (B) The vehicle, if it cannot conveniently be used for such purpose in any other road, to be used in connection with any of the following operations, namely: -
 - (i) Building, industrial or demolition operations;
 - (ii) The removal of any obstruction to traffic;
 - (iii) The laying, erection, alteration or repair in or on land adjacent to the said lengths of sides of road of any sewer or any main pipe or apparatus for the supply of gas, water or electricity or any telecommunications apparatus defined in the Telecommunications Act 1984;
 - (C) The vehicle, if it cannot conveniently be used for such purpose in any other road, to be used in the service of a Local Authority or a Water Authority in pursuance of statutory powers or duties;
 - (D) The vehicle to be used by a Universal Service Provider for the purpose of delivering or collecting postal packets;

- (E) Public Services Vehicles operating a local service when waiting at an authorised bus stop to set down or pick up passengers, or to school buses;
 - (F) The vehicle to take in petrol, oil, water or air from any garage situated on or adjacent to the said length of road.
11. Nothing in Article 7 and 8 of this Order shall render it unlawful to cause or permit any vehicle to wait on the length of side of road specified therein for so long as may be necessary to enable goods to be loaded and unloaded from the vehicle.
 12. The prohibitions imposed by Article 6, 7 and 8 of this Order shall not apply to Police, Fire, Ambulance or other Emergency Service vehicles or to Local Authority vehicles when in pursuance of statutory duties or powers.
 13. The prohibitions imposed by Article 8 of this Order shall not apply to the holders of a Residents Permit Holders.
 14. Nothing in Article 8 of this Order shall render it unlawful to cause or permit a disabled person's vehicle which displays in the relevant position a disabled person's badge to wait on the lengths of sides of road referred to in the said Article.

SCHEDULES

Schedule 1 - Prohibition of Waiting, Loading and Unloading at Any Time

- 1.1 B4242 Pontneathvaughan Road, Glynneath (North West Side)**
From the County Boundary for a distance of approximately 110 metres in a south westerly direction.
- 1.2 B4242 Pontneathvaughan Road, Glynneath (North West Side)**
From a point approximately 272 metres south west of the western kerblineline of High Street to a point approximately 287 metres south west of the western kerblineline of High Street, a distance of approximately 15 metres in a south westerly direction.
- 1.3 B4242 Pontneathvaughan Road, Glynneath (North West Side)**
From a point approximately 305 metres south west of the western kerblineline of High Street to a point approximately 397 metres south west of the western kerblineline of High Street, a distance of approximately 92 metres in a south westerly direction.

- 1.4 B4242 Pontneathvaughan Road, Glynneath (North West Side)**
From a point approximately 412 metres south west of the western kerbline of High Street to a point approximately 427 metres south west of the western kerbline of High Street, a distance of approximately 15 metres in a south westerly direction.
- 1.5 B4242 Pontneathvaughan Road, Glynneath (North West Side)**
From a point approximately 529 metres south west of the western kerbline of High Street to a point approximately 544 metres south west of the western kerbline of High Street, a distance of approximately 15 metres in a south westerly direction.
- 1.6 B4242 Pontneathvaughan Road, Glynneath (North West Side)**
From a point approximately 560 metres south west of the western kerbline of High Street to a point approximately 575 metres south west of the western kerbline of High Street, a distance of approximately 15 metres in a south westerly direction.
- 1.7 B4242 Pontneathvaughan Road, Glynneath (South East Side)**
From a point opposite and in line with the eastern kerbline of High Street to a point approximately 40 metres east thereof to the County Boundary.
- 1.8 B4242 Pontneathvaughan Road, Glynneath (South East Side)**
From a point opposite and in line with the eastern kerbline of High Street to a point approximately 225 metres south west thereof
- 1.9 B4242 Pontneathvaughan Road, Glynneath (South East Side)**
From a point approximately 370 metres west of a point opposite and in line with the eastern kerbline of High Street to a point approximately 605 metres west of a point opposite and in line with the eastern kerbline of High Street, a distance of approximately 235 metres in a south westerly direction
- 1.10 High Street, Glynneath (East Side)**
From its junction with the northern kerbline of B4242 Pontneathvaughan Road to a point approximately 10 metres north thereof.
- 1.11 High Street, Glynneath (East Side)**
From a point approximately 27 metres north of its junction with the northern kerbline of B4242 Pontneathvaughan Road to a point approximately 57 metres north and then east of its junction with the northern kerbline of B4242 Pontneathvaughan Road to the County

Boundary, a distance of approximately 30 metres in a north and then easterly direction.

1.12 High Street, Glynneath (West Side)

From its junction with the north western kerbline of B4242 Pontneathvaughan Road to its junction with the southern kerbline of B4242 Pontneathvaughan Road link to High Street, a distance of approximately 27 metres in a northerly direction.

1.13 High Street, Glynneath (West Side)

From its junction with the northern kerbline of B4242 Pontneathvaughan Road link to High Street to a point approximately 36 metres north and then east thereof, to the County Boundary.

1.14 B4242 Pontneathvaughan Road Link To High Street, Glynneath (North Side)

From its junction with the western kerbline of High Street to a point approximately 6 metres west thereof.

1.15 B4242 Pontneathvaughan Road Link To High Street, Glynneath (South Side)

From its junction with the western kerbline of High Street to a point approximately 3 metres west thereof.

Schedule 2 – Prohibition of Waiting At Any Time

2.1 B4242 Pontneathvaughan Road, Glynneath (North West Side)

High Street to a point approximately 112 metres south west of the western kerbline of High Street, a distance of approximately 50 metres in a south westerly direction.

2.2 B4242 Pontneathvaughan Road, Glynneath (North West Side)

From a point approximately 136 metres south west of the western kerbline of High Street to a point approximately 272 metres south west of the western kerbline of High Street, a distance of approximately 136 metres in a south westerly direction.

Schedule 3 – Limited Waiting 3 hours, No Return Within 3 hours, 7AM to 11PM, Resident Permit Holders Exempt

3.1 B4242 Pontneathvaughan Road, Glynneath (South East Side)

From a point approximately 225 metres west of a point opposite and in line with the eastern kerbline of High Street to a point approximately 370

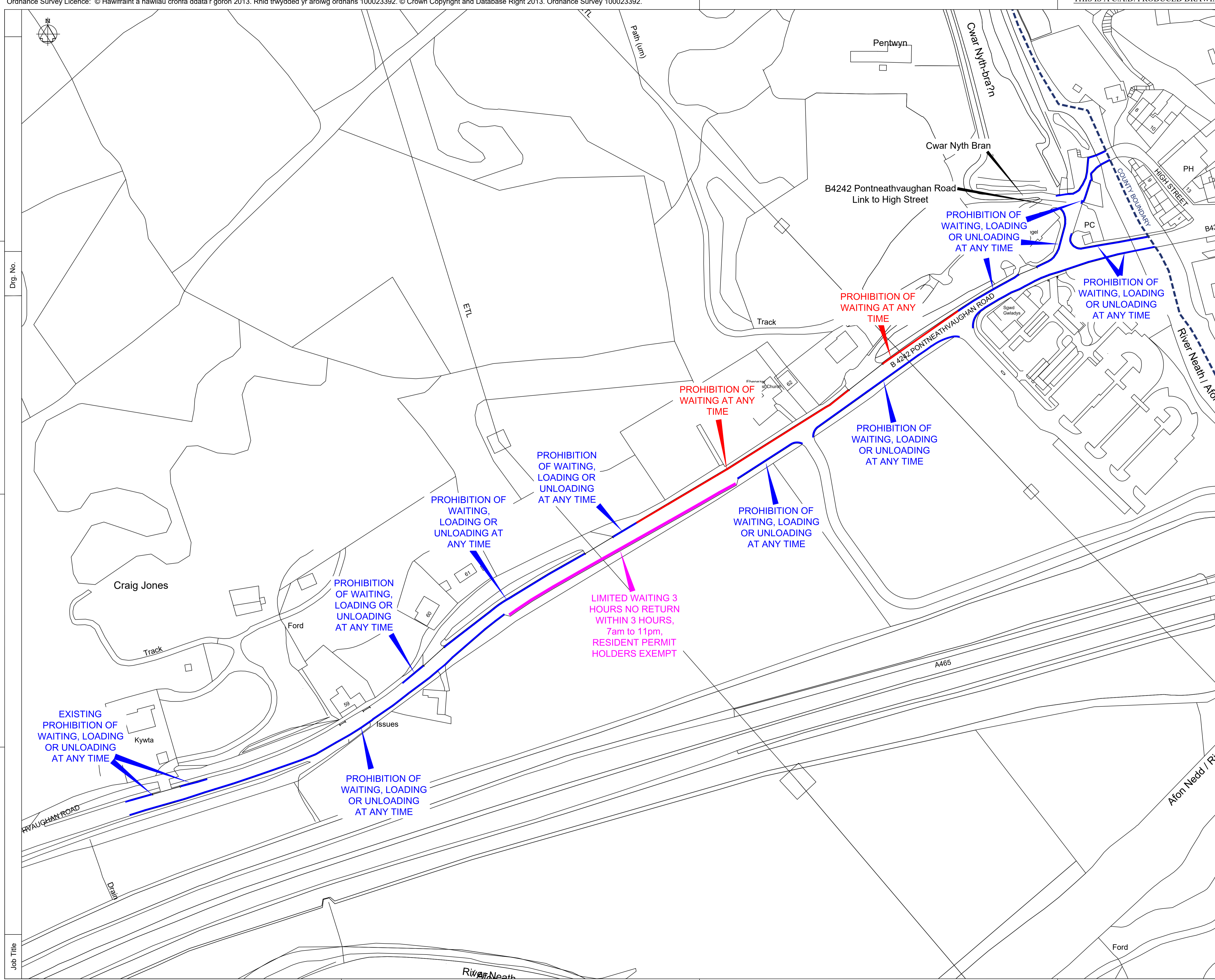
metres west of a point opposite and in line with the eastern kerbline of High Street, a distance of approximately 145 metres in a south westerly direction.

THE COMMON SEAL OF)
THE COUNCIL WAS)
HEREUNTO AFFIXED THIS)
DAY OF 2026)
IN THE PRESENCE OF: -)

PROPER OFFICER

Drwg. No.

Job Title



NOTES

1. All dimensions are in millimetres unless otherwise stated.

Key

- PROPOSED PROHIBITION OF WAITING, LOADING OR UNLOADING AT ANY TIME
- PROPOSED PROHIBITION OF WAITING AT ANY TIME
- PROPOSED LIMITED WAITING 3 HOURS NO RETURN WITHIN 3 HOURS, 7am to 11pm, RESIDENT PERMIT HOLDERS EXEMPT

Rev	Details	Dr	Ch	Ap	Date

Client

Cyngor Castell-nedd Port Talbot
Neath Port Talbot Council

ENGINEERING AND TRANSPORT

NICOLA PEARCE BSC (Hons), Dip TP, MRTPI
DIRECTOR OF ENVIRONMENT AND REGENERATION
THE QUAYS, BRUNEL WAY
BAGLAN ENERGY PARK
NEATH SA11 2GG

Job Title

B4242 PONTNEATHVAUGHAN ROAD
GLYNNEATH
PROPOSED TRAFFIC REGULATION ORDERS

File No.	Financial Code No.				
Drawn	CGD	Checked	MCB	Approved	H1H
Date	FEB 26	Date	FEB 26	Date	FEB 26
Scales	AS SHOWN @ A1	Status			
Drawing No.	D32350 / TRO2 / ADVERT				