

Neath Canal

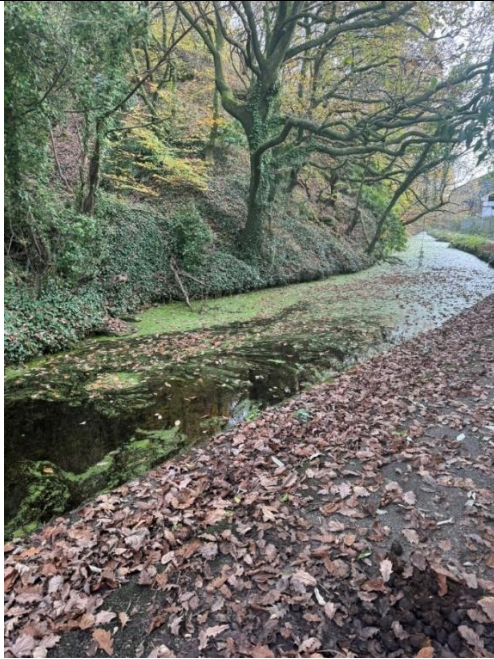


Image 1 – Pipe Bridge - Evidence of Neath canal condition



Image 2 – Canal viewed from Diamond Bridge showcasing structure and canal condition



Image 3 – Giants Grave turnover Bridge with vegetation on embankment



Image 4 – Giants Grave turnover showing reeds and vegetation blocking canal near edges and tarmacked footpath



Image 5 – Lift Bridge surrounded by thick vegetation



Image 6 – Canal adjacent to Lift Bridge overgrown with thick reeds and vegetation



Image 7 – Landfill Site Bridge with low headroom but sufficient for canal



Image 8 – Neath Junction Rail Bridge canal full of thick reed vegetation



Image 9 - Neath Junction Rail Bridge highlighting low headroom (5'3) for pedestrians but sufficient for canal navigation



Image 10 – Pipe Bridge with rusted exterior



Image 11 – Pipe Bridge with some vegetation on side bank with path in good condition



Image 12 – Tricks Bridge structure partially hidden by thick vegetation



Image 13 – Tricks Bridge river condition with reeds and animals grazing in adjacent field



Image 14 – Metal box Bridge with pedestrian and cycle path

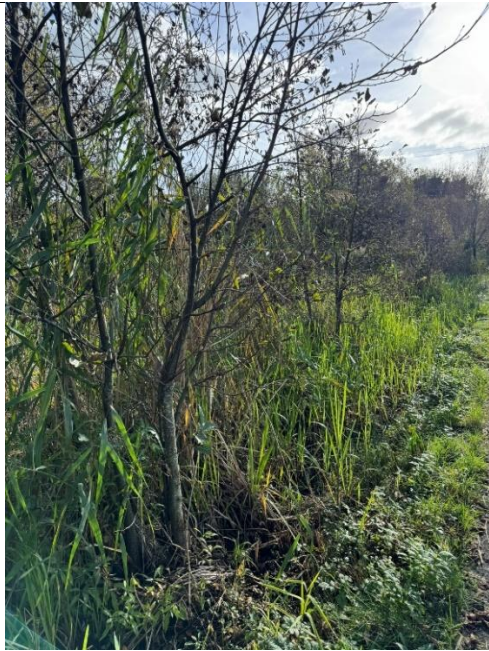


Image 15 – Canal section with thick vegetation near Metal Box Bridge



Image 16 – Pipe Bridge with adjacent metal tower. Rusted exterior



Image 17 – Pipe Bridge path and overgrown canal with thick reed vegetation



Image 18 – Swansea and Rhondda Bay Railway Bridge with thick vegetation growing on pier



Image 19 - Swansea and Rhondda Bay Railway Bridge with low headroom (5'8) for pedestrians



Image 20 – Link Road Bridge



Image 21 – Link Road Bridge side view with path in good condition



Image 22 – Canal in good condition near Link Road Bridge



Image 23 – Section of the canal near Link Road Bridge with light vegetation on banks



Image 24 – Pipe Bridge with rusted exterior and reeds blocking canal



Image 25- Pipe Bridge footpath and canal in relatively good condition



Image 26 – Milland Road Bridge with insufficient headroom for navigation



Image 27 – Canal section near Milland Road Bridge with trees overhanging



Image 28 – Pipe bridge with surrounding truss structure and overgrown canal



Image 29 – Canal section near Pipe Bridge clogged with reeds and overhanging tree



Image 30 – Bridge Street Bridge with low head room unsuitable for navigation



Image 31 – Bridge Street Bridge canal condition with large vegetation and trees overhanging water

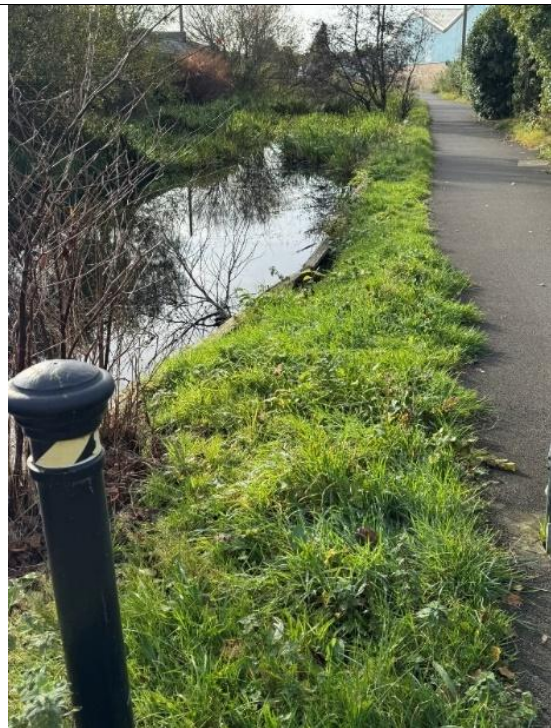


Image 32 – Bridge Street Bridge canal condition with rotten wood supporting canal embankment



Image 33 – Bridge Street Bridge very overgrown section of the canal



Image 34 – Canalside bridge with low vegetation on embankment



Image 35 – View from Tonna Lock Bridge with algal blooms in canal



Image 36 – Tonna Lock Structure with efflorescence on bricks and rhododendron growing on embankment



Image 37 – Tonna Lock Structure viewed from opposite embankment



Image 38 – Approach to Tonna Lock



Image 39 – Canal section near Dulais Fach Road Bridge with fallen tree in canal

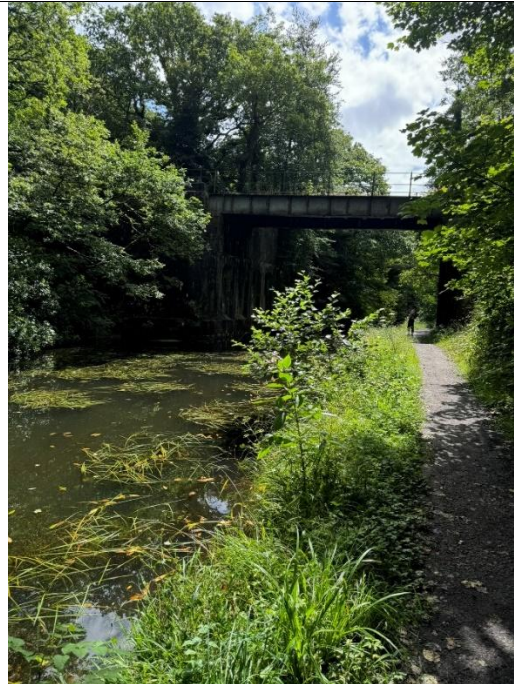


Image 40 – Vale of Neath Railway Bridge over canal



Image 41 – Junction with Tennant Canal



Image 42 – Howards Footbridge over Neath Canal



Image 43 – Trees and bushes growing on canal embankments near Howards Footbridge



Image 44 – Clearer section of the canal near Howards Footbridge



Image 45 – Spillway into River Neath near Howards Footbridge



Image 46 – Possible evidence of overtopping (LHS) from Canal near Howards Footbridge



Image 47 – Evidence of overtopping from Canal near Howards Footbridge



Image 48 – Pontygwaith Bridge path



Image 49 – Footpath near Pontygwaith Bridge



Image 50 - Evidence of overtopping/ flooding (sandbag) across footpath from Canal near Pontygwaith Bridge



Image 51 – Lock Machin Bridge with buddleia growing on one abutment



Image 52 - Lock Machin with inoperable lock



Image 53 – Canal near Lock Machin



Image 54 – Canal with small trees on embankment near Lock Machin



Image 55 – Ynysnedd Bridge with adjacent pipe bridge



Image 56 - Ynysnedd Bridge as viewed from opposite side

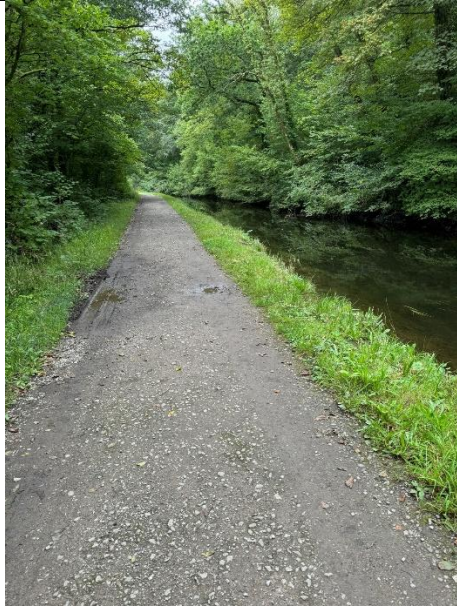


Image 57 – Canal section near Ynysnedd Bridge with slight flooding on footpath



Image 58 – Spillway in footpath to River Neath near Ynysnedd Bridge



Image 59 – Abertwrch Bridge with vegetation growing next to abutments



Image 60 – Reeds and small shrubs overhanging canal near Abertwrch Bridge



Image 61 – Algae/vegetation blocking canal near Abertwrch Bridge



Image 62 – Reeds/shrubs clogging canal near Abertwrch Bridge



Image 63 – Clun Isaf Lock Structure with efflorescence from masonry



Image 64 – Clun Isaf Lock currently inoperable with view of access ladder



Image 65 – Footbridge



Image 66 – Well maintained section of the canal



Image 67 – Section of Neath Canal
with trees overhanging



Image 68 – Ynysbwlllog Aqueduct with well-
maintained footpath



Image 69 – Ynysbwlllog Aqueduct in well maintained condition



Image 70 – Section of the canal near Ynysbwlllog Aqueduct with reeds and lily pads obstructing navigation



Image 71 – A465 Bridge with pedestrian footpath adjacent to canal



Image 72 – Ynysbwlllog bridge with light vegetation on footpath



Image 73 – Footpath near Ynysarwed Farm Bridge



Image 74 - Ynysarwed Isaf Lock currently inoperable



Image 75 – Himalayan Balsam invasive plant near Ynysarwed Isaf Lock



Image 76 – Canal clogged with reeds near Ynysarwed Isaf Lock



Image 77 – Ynsarwed Uchaf Lock

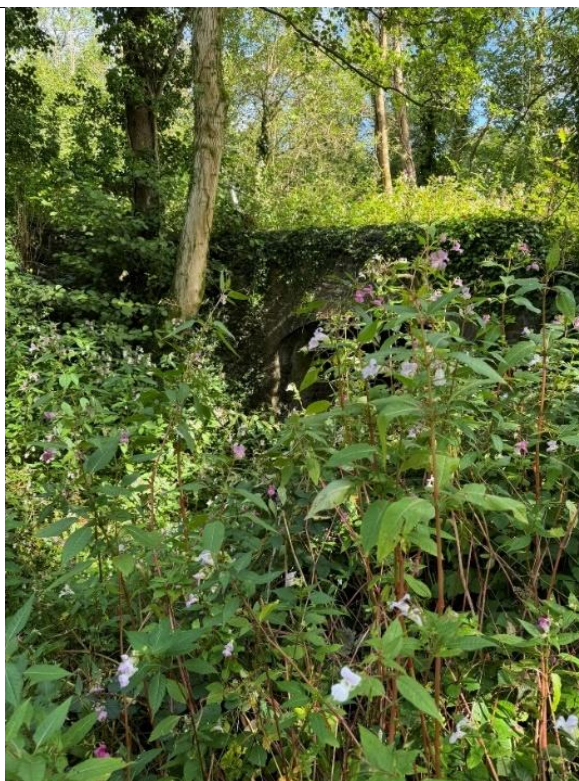


Image 78 – Ynysbiben Bridge



Image 79 – Resolven Uchaf Lock



Image 80 – Crugiau Bridge



Image 81 – Crugiau Lock now inoperable



Image 82 – Rheola Bridge



Image 83 – Rheola Iron Aqueduct



Image 84 – Rheola Aqueduct



Image 85 – Aberclwyd Bridge



Image 86 - Aberclwyd Lock currently inoperable



Image 87 – Ynys yr Allor Lock currently inoperable



Image 88 – Maesgwyn Bridge



Image 89 - Maesgwyn Lock currently inoperable



Image 90 – Ysgwrfa Lock currently inoperable



Image 91 - Ysgwrfa Bridge

Tennant Canal



Image 1 – Aberdulais Aqueduct



Image 2 – Aberdulais Lock currently inoperable



Image 3 – Station Road Bridge



Image 4 – Overhead Roundabout/viaduct/bridge on A465



Image 5 – Ash Tip Bridge



Image 6 -Cadoxton Bridge



Image 7 – Vale of Neath Railway Bridge



Image 8 – Vale of Neath Railway Canal section in relatively good condition



Image 9 – A465 Bridge



Image 10 – Croft Bridge



Image 11 – Croft Bridge canal section with small Lilly pads



Image 12 – London Main Line Railway canal section relatively clear - tree-lined section of the canal with floating vegetation near the banks, bordered by a grassy towpath where two walkers continue along the route.



Image 13 – Bridge Street Bridge



Image 14 - Bridge Street Bridge Canal section with small reeds on embankment.



Image 15 – A465 Bridge



Image 16 – A465 Approach bridge.



Image 17 – A465 bridge approach canal section



Image 18 – A465 approach bridge with narrow pedestrian path



Image 19 – A465 approach canal section



Image 20 – Spillway into River Neath



Image 21 – Neath Abbey Bridge



Image 22 – Neath Abbey Canal section with light debris in canal



Image 23 – Old Tramroad bridge



Image 24 – Neath Abbey in Estate New Bridge



Image 25 – Neath Abbey in Estate New Bridge canal section



Image 26– Skewen Tramroad bridge



Image 27 – A465 Bridge



Image 28 – Pipe Bridge



Image 29 – Pipe Bridge canal section



Image 30 – Crown Copperworks Bridge



Image 31 – Abbey Wharf Bridge



Image 32 – Abbey Wharf Bridge canal condition



Image 33 – Railway Bridge



Image 34 – Cwrt yr Betws Bridge



Image 35 – M4 Bridge with canal adjacent to bridge



Image 36 – M4 Bridge canal section with minor footpath flooding



Image 37 – Gas works bridge with narrow footpath



Image 38 – Railway Bridge with narrow footpath



Image 39 – Red Jacket Bridge -



Image 40 – Quarry Bridge with shrubs on embankments



Image 41 – Rhondda and Swansea Railway Bridge with narrow footpath



Image 42 – Jersey Marine Bridge with grassy shrubs surrounding



Image 43 - Jersey Marine Bridge canal section in moderately good condition



Image 44 – Access Road canal section with reeds on both embankments



Image 45 – Former Vale of Neath Railway Bridge