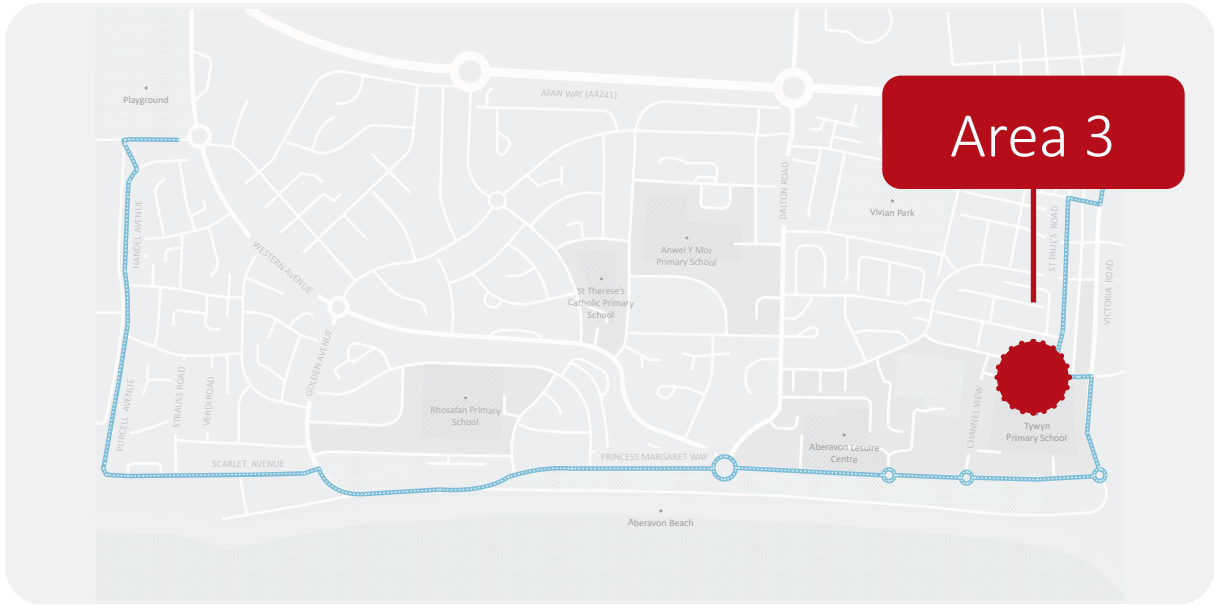


PUBLIC SPACE IMPROVEMENTS

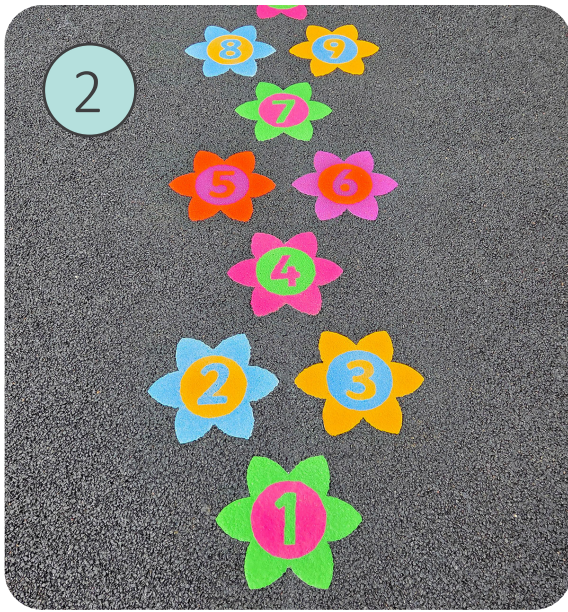
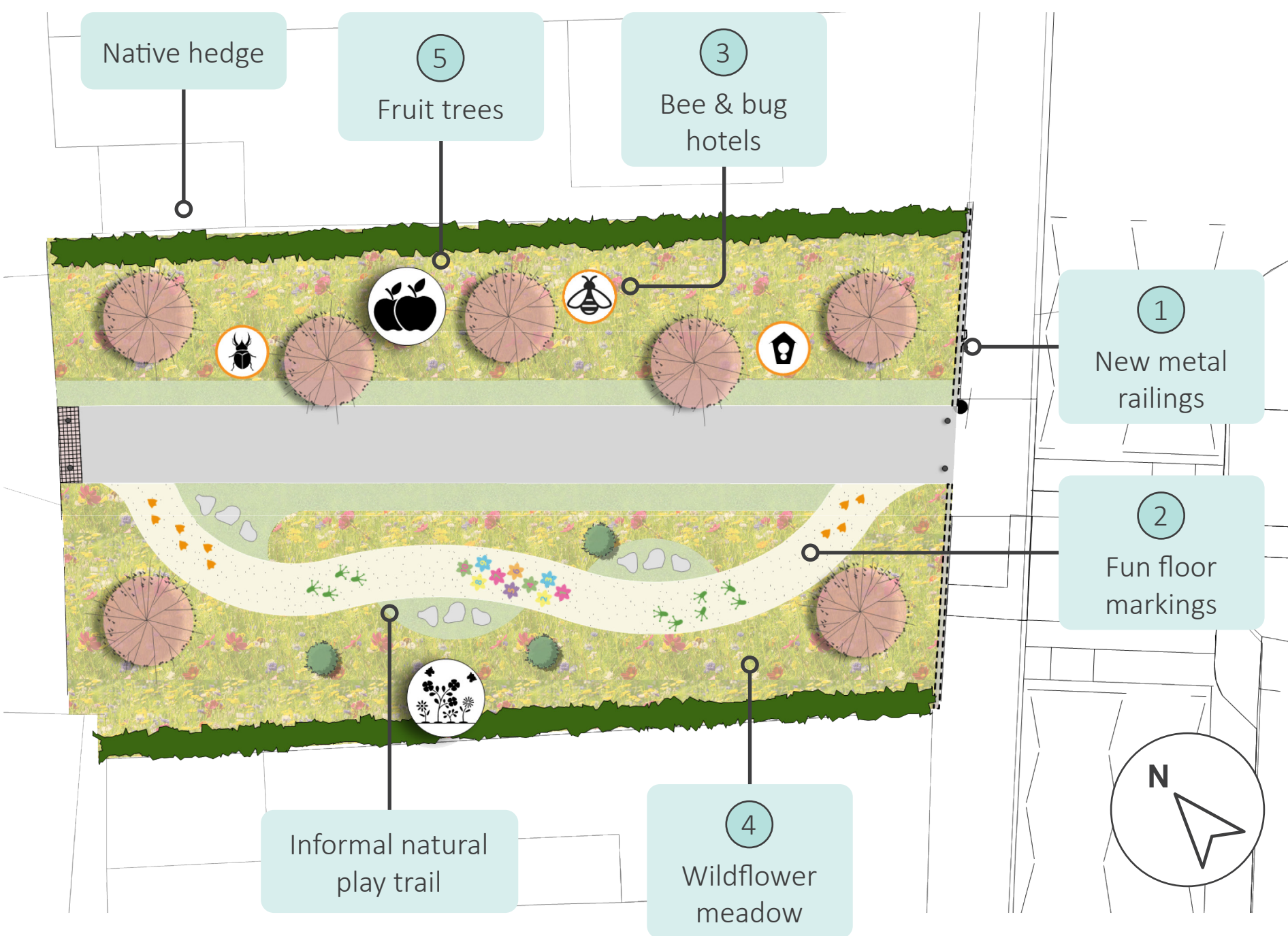
Approach to Tywyn Primary School



Area 3 focuses on improving the grassed space between Victoria Road and St Paul's Road, creating a safer and more enjoyable route for children travelling to Tywyn Primary School from the proposed Toucan Crossing on Victoria Road. The proposals were developed with input from pupils, whose ideas helped shape a playful, nature-rich and welcoming space for young people and families. Key elements include:

- ✓ A separate footpath to provide a clearer, safer walking route
- ✓ Playful elements integrated along the path to make the journey more engaging
- ✓ Miniature apple trees to introduce seasonal interest and opportunities for learning
- ✓ A wildflower meadow area to support biodiversity and create a colourful, natural setting
- ✓ Bug-friendly features to encourage wildlife and support outdoor learning

Proposed Landscape Concept Plan



Proposed aerial view

