

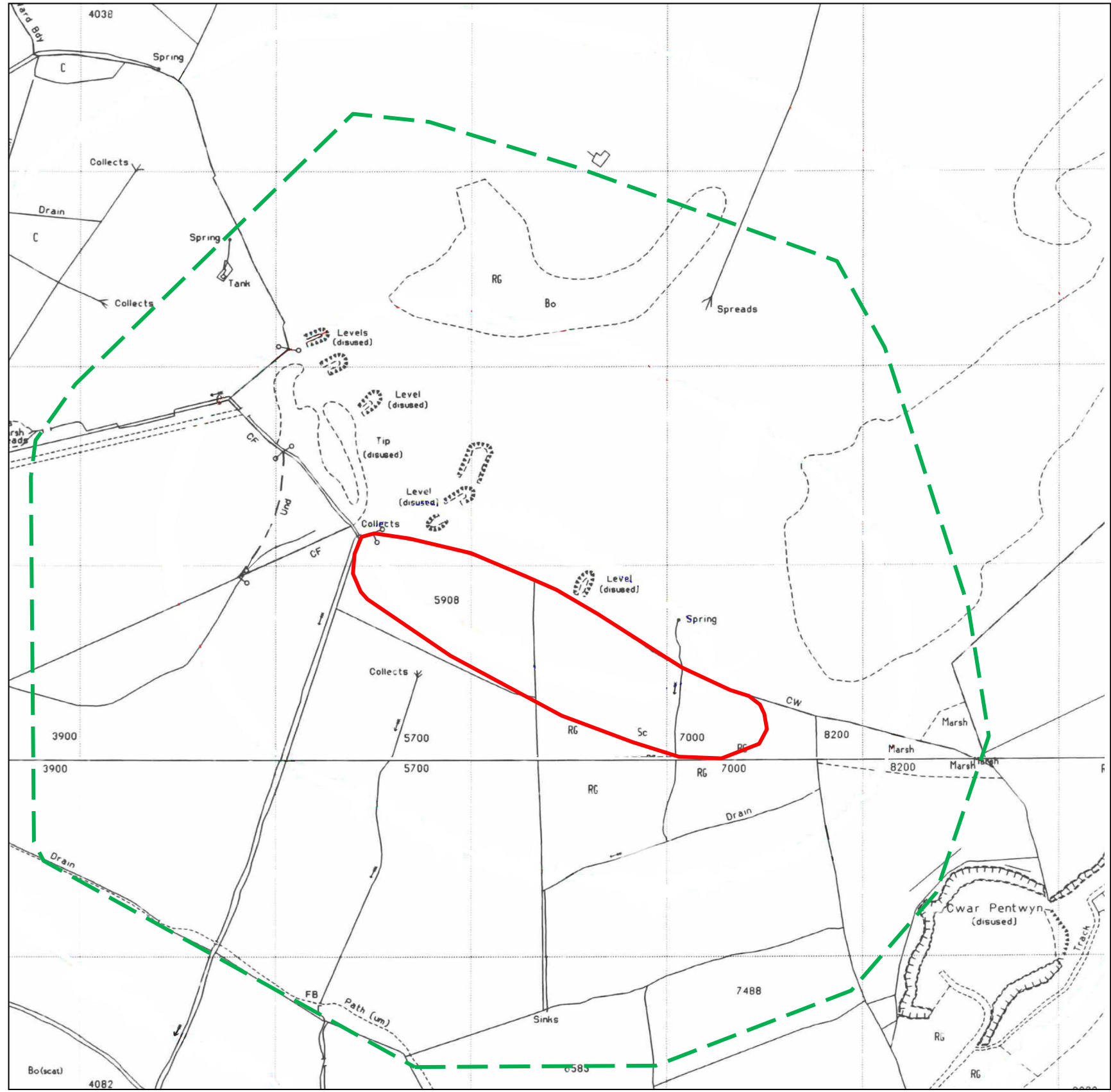


FIGURES

Notes:

 Approximate extents of
BGS No. 14 Landslide

 Wider Study Area



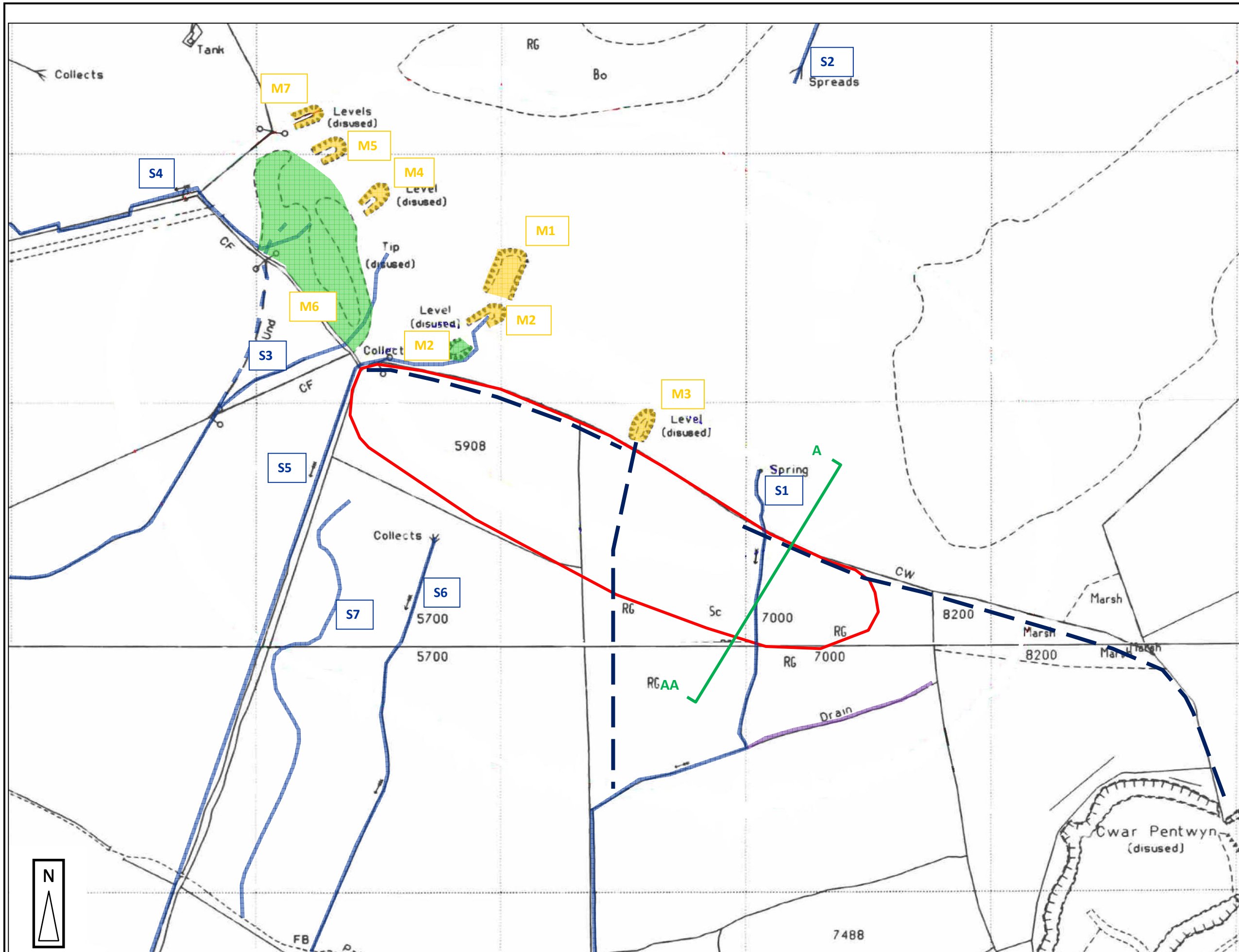
1993 Ordnance Survey used as a base plan.







PROJECT:
CILMAENGWYN LANDSLIDE,
PRELIMINARY ASSESSMENT

Scale: 1:2500 (approx. at A3)

FIGURE 1:
SITE PLAN

Earth Science Partnership
Consulting Engineers | Geologists | Environmental Scientists
33 Cardiff Road, Taffs Well,
Cardiff CF15 7RB Tel: 029 2081 3385
enquiries@earthsciencepartnership.com



- Notes:**
-  Extent of BGS 14 Landslide
 -  Mine Entry with ESP reference number
 -  Spoil from Mine Entry with ESP reference number
 -  Stream, River with ESP reference number
 -  Stream/Ditch identified during site walkover
 -  Line of Section (Figure 5)

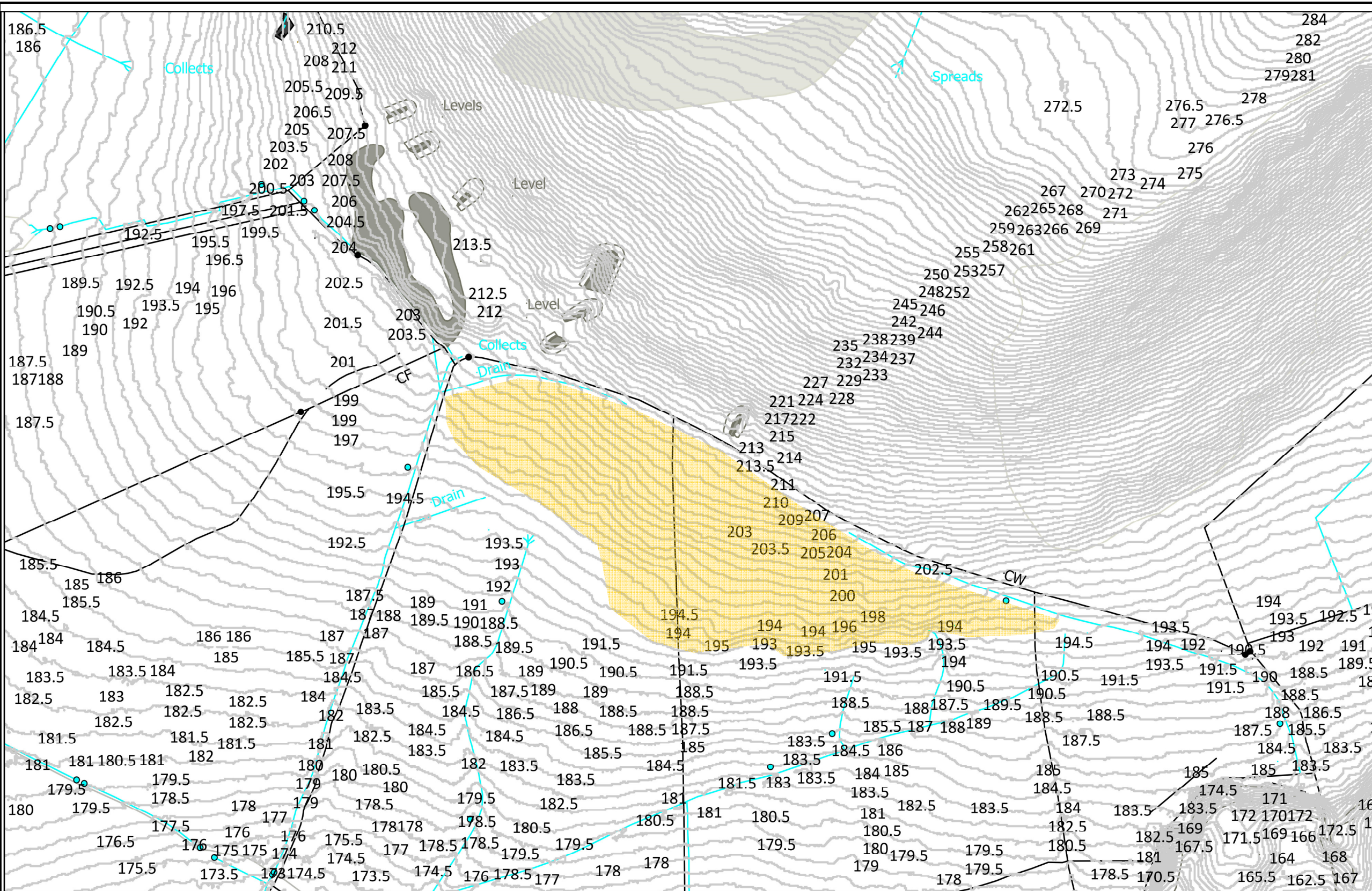
1993 Ordnance Survey used as a base plan.

PROJECT:
CILMAENGWYN LANDSLIDE,
PRELIMINARY ASSESSMENT


Scale: 1:1500 (approx. at A3)

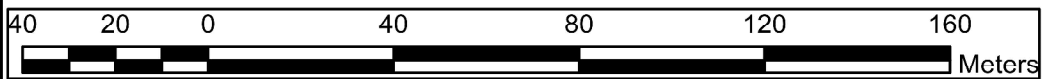
FIGURE 2:
MINING AND HYDROLOGICAL
FEATURES

Earth Science Partnership
Consulting Engineers | Geologists | Environmental Scientists
33 Cardiff Road, Taffs Well,
Cardiff CF15 7RB Tel: 029 2081 3385
enquiries@earthsciencepartnership.com



Notes:
 LiDAR information from Lle Geo-Portal for Wales.

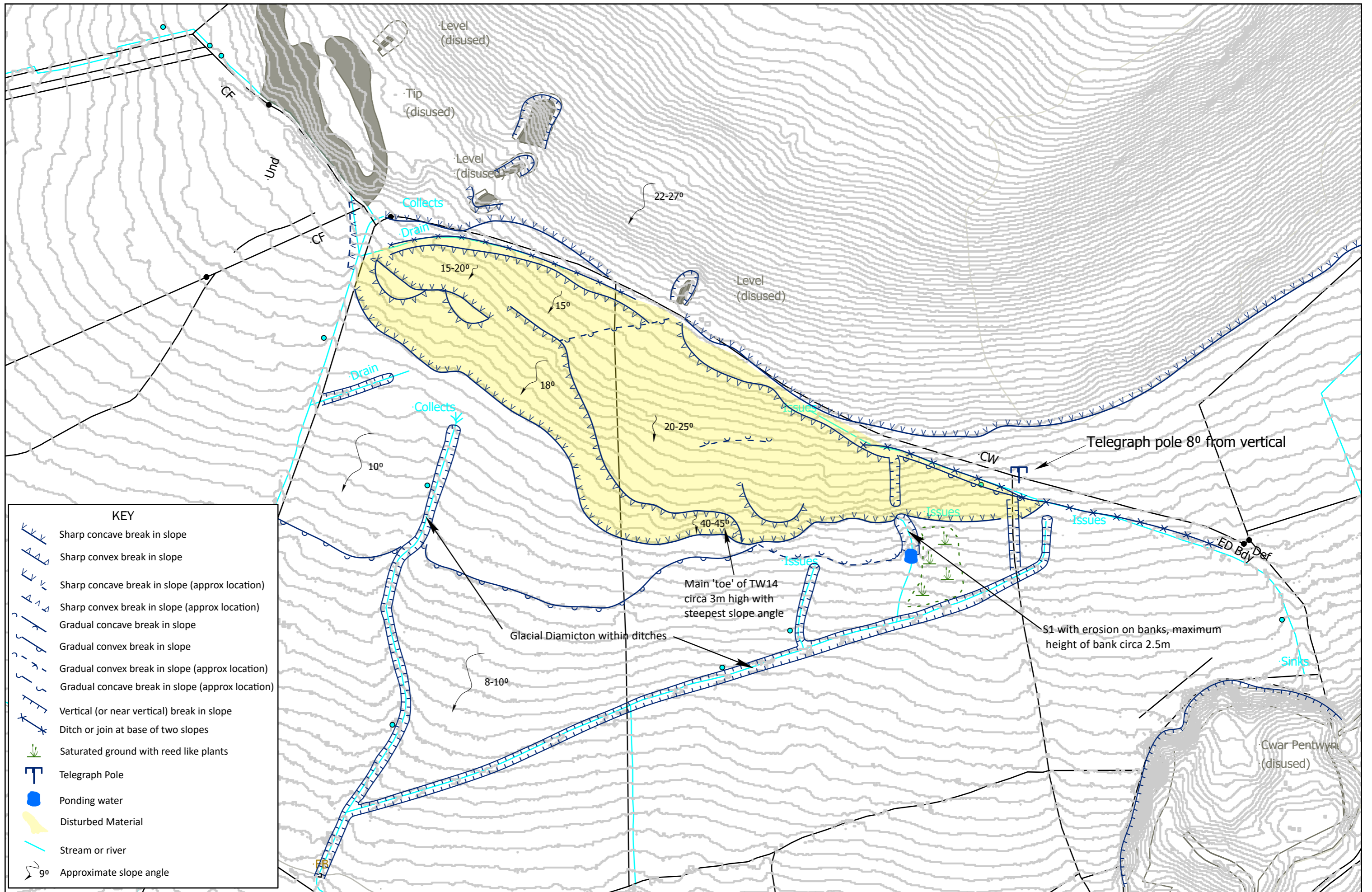
 Approx. extents of Disturbed Material (see Figure 4)



PROJECT:
 CILMAENGWYN LANDSLIDE,
 PRELIMINARY ASSESSMENT

Scale: AS SHOWN

FIGURE 3:
 LiDAR CONTOURS

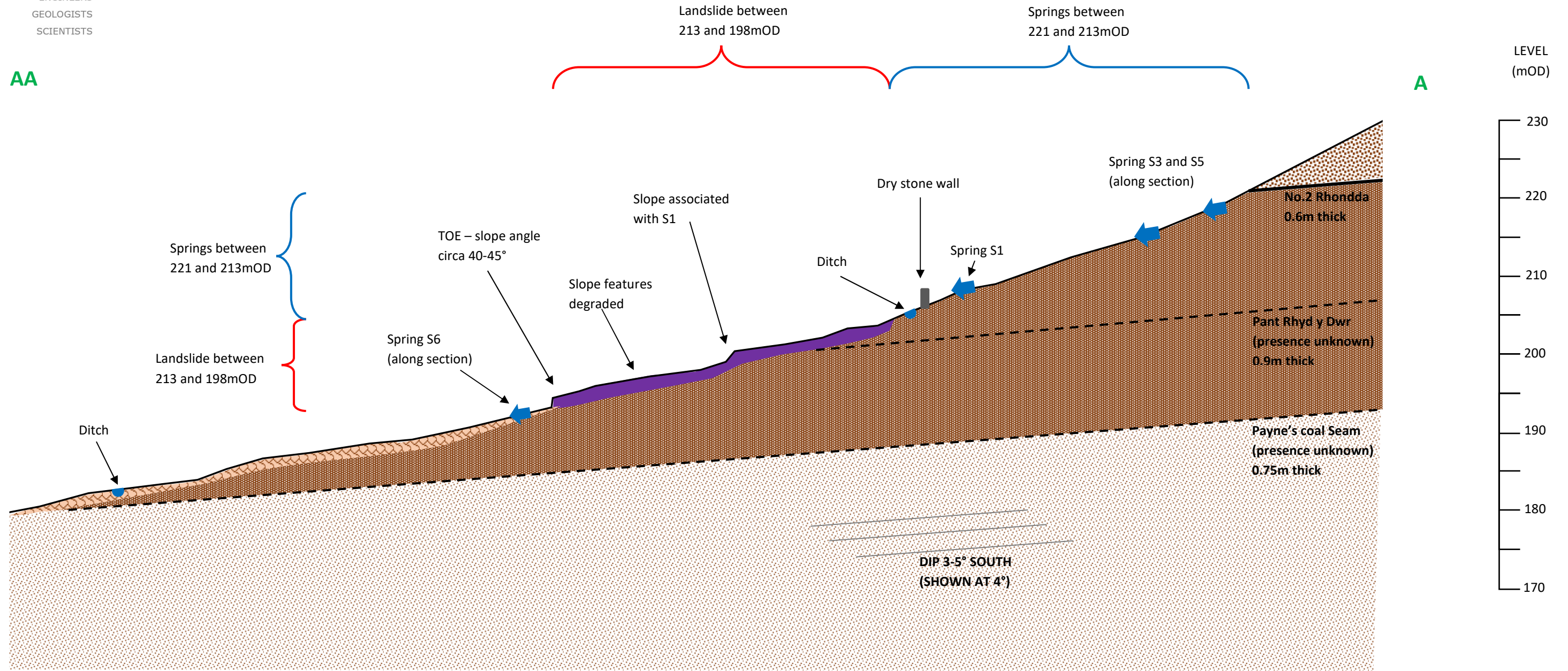


Cilmaengwyn Landslide Assessment
Figure 4: Geomorphological Map



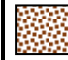



AA

A



Notes:

-  Landslide Debris
-  Glacial Diamicton
-  Rhondda Member (sandstone)
-  Llynfi Member (argillaceous/shales)
-  Llynfi Member (sandstone)

PROJECT:
CILMAENGWYN LANDSLIDE,
PRELIMINARY ASSESSMENT

Scale: 1:500 (approx.) at A3

FIGURE 5:
CONCEPTUAL GROUND MODEL

Earth Science Partnership
Consulting Engineers | Geologists | Environmental Scientists
33 Cardiff Road, Taffs Well,
Cardiff CF15 7RB Tel: 029 2081 3385
enquiries@earthsciencepartnership.com