

**NEATH PORT TALBOT COUNTY BOROUGH COUNCIL**  
**CYNGOR BWRDEISTREF SIROL CASTELL-NEDD PORT TALBOT**

**(ABERAVON SEAFRONT)**

**(REVOCAION), (PROHIBITION OF WAITING, LOADING AND UNLOADING AT ANY TIME) (PAY BY PHONE PARKING PLACE) AND (DISABLED BADGE HOLDERS)**

**ORDER 2025**

NOTICE is given that the Council on the 17<sup>th</sup> March 2025 made an Order in pursuance of its powers as contained in Sections 1, 2, 32, 45 and Part IV of Schedule 9 of the Road Traffic Regulation Act 1984 the effect of which is as set out in the Schedules below.

A copy of the Order can be inspected on the Council's Internet Website <https://www.npt.gov.uk/traffic-regulation-orders-tros>

The Order will come into force on the 1<sup>st</sup> April 2025.

If any person wishes to question the validity of the Order or of any of its powers on the grounds that it or they are not within the powers conferred by the Act or that any requirements of the Act or of any instrument made under the Act has not been complied with, that person may, within 6 weeks from the date on which the Order is made, apply for that purpose to the High Court.

**SCHEDULES**

**Revocation – Schedule 1**

- 1.1 (Aberavon Seafont) (Prohibition of Waiting, Loading and Unloading At Any Time) (No Stopping Except Buses) (Limited Waiting) and (Disabled Badge Holders) Order 2018

**Schedule 2 – Prohibition of Waiting, Loading or Unloading At Any Time**

- 2.1 **Golden Avenue, Sandfields (West Side)**  
From a point approximately 6 metres south west of its junction with Auburn Avenue for a distance of approximately 50 metres in a south westerly direction.
- 2.2 **Golden Avenue, Sandfields (East Side)**  
From a point approximately 8 metres north of its junction with Tir Morfa Road for a distance of approximately 50 metres in a south westerly direction.
- 2.3 **Scarlet Avenue, Sandfields (North East Side)**  
From its junction with Golden Avenue for a distance of approximately 22 metres in a north westerly direction.
- 2.4 **Scarlet Avenue, Sandfields (South West Side)**  
From its junction with The Princess Margaret Way for a distance of approximately 55 metres in a north westerly direction.

- 2.5 Tir Morfa Road, Sandfields (Both Sides)**  
From its junction with Golden Avenue for a distance of approximately 12 metres in an easterly direction
- 2.6 The Princess Margaret Way (South West Side)**  
From its junction with Scarlet Avenue for a distance of approximately 168 metres in a south then south easterly direction.
- 2.7 The Princess Margaret Way (South West Side)**  
From a point approximately 214 metres south east of its junction with Scarlet Avenue for a distance of approximately 80 metres in a south easterly direction.
- 2.8 The Princess Margaret Way (South West Side)**  
From its junction with the western exit of Beach Lay-by North for a distance of approximately 61 metres in a north westerly direction.
- 2.9 The Princess Margaret Way (South West Side)**  
From its junction with the western exit of Beach Lay-by North to its junction with the eastern entrance of Beach Lay-by North, a distance of approximately 180 metres.
- 2.10 The Princess Margaret Way (South West Side)**  
From its junction with the eastern entrance to Beach Lay-by North for a distance of approximately 14 metres in a south easterly direction.
- 2.11 The Princess Margaret Way (South West Side)**  
From a point approximately 44 metres south east of its junction with the eastern entrance of Beach Lay-by North for a distance of approximately 135 metres in a south easterly direction.
- 2.12 The Princess Margaret Way (South West Side)**  
From its junction with the western exit of Beach Lay-by South to its junction with the eastern entrance of Beach Lay-by South, a distance of approximately 94 metres.
- 2.13 The Princess Margaret Way (South West Side)**  
From its junction with the eastern entrance of Beach Lay-by South for a distance of approximately 54 metres in a south easterly then southerly direction.
- 2.14 The Princess Margaret Way (South West Side)**  
From its junction with the Beach Access Road for a distance of approximately 171 metres in an easterly then south easterly direction.
- 2.15 The Princess Margaret Way (South West Side)**  
From a point approximately 560 metres north west of its junction with Victoria Road for a distance of approximately 67 metres in a south easterly direction.
- 2.16 The Princess Margaret Way (South West Side)**  
From a point approximately 448 metres north west of its junction with Victoria Road for a distance of approximately 6 metres in a south easterly direction.

- 2.17 The Princess Margaret Way (South West Side)**  
From a point approximately 358 metres north west of its junction with Victoria Road for a distance of approximately 82 metres in a south easterly direction.
- 2.18 The Princess Margaret Way, Sandfields (North East Side)**  
From its junction with Golden Avenue for a distance of approximately 24 metres in a southerly direction.
- 2.19 The Princess Margaret Way, Sandfields (North East Side)**  
From a point approximately 104 metres south of its junction with Tir Morfa Road for a distance of approximately 250 metres in a south easterly direction.
- 2.20 The Princess Margaret Way, Sandfields (North East Side)**  
From its junction with Pier Way for a distance of approximately 126 metres in a north westerly direction.
- 2.21 The Princess Margaret Way, Sandfields (North East Side)**  
From its junction with Pier Way to its junction with Marine Drive, a distance of approximately 174 metres.
- 2.22 The Princess Margaret Way, Sandfields (North East Side)**  
From its junction with Marine Drive for a distance of approximately 25 metres in a south easterly direction.
- 2.23 The Princess Margaret Way, Sandfields (North East Side)**  
From a point approximately 58 metres south east of its junction with Marine Drive for a distance of approximately 60 metres in a south easterly direction.
- 2.24 The Princess Margaret Way, Sandfields (North East Side)**  
From a point approximately 167 metres south east of its junction with Marine Drive for a distance of approximately 71 metres in a south easterly direction.
- 2.25 The Princess Margaret Way, Sandfields (North East Side)**  
From its junction with Western Avenue for a distance of approximately 60m in a south west then north westerly direction.
- 2.26 The Princess Margaret Way, Sandfields (North East Side)**  
From its junction with Western Avenue to its junction with Dalton Road, a distance of approximately 20 metres.
- 2.27 The Princess Margaret Way, Sandfields (North East Side)**  
From its junction of Dalton Road for a distance of approximately 68 metres in a south then south easterly direction.
- 2.28 The Princess Margaret Way, Sandfields (North East Side)**  
From its junction with the Hotel Access Road for a distance of approximately 16 metres in a north westerly direction.

- 2.29 The Princess Margaret Way, Sandfields (North East Side)**  
From its junction with the Hotel Access Road for a distance of approximately 52 metres in a south easterly direction.
- 2.30 The Princess Margaret Way, Sandfields (North East Side)**  
From its junction with the Cinema Access Road for a distance of approximately 42 metres in a north westerly direction.
- 2.31 The Princess Margaret Way, Sandfields (North East Side)**  
From its junction with the Cinema Access Road for a distance of approximately 69 metres in a south easterly direction.
- 2.32 The Princess Margaret Way, Sandfields (North East Side)**  
From its junction with Channel View for a distance of approximately 30 metres in a north westerly direction.
- 2.33 The Princess Margaret Way, Sandfields (North East Side)**  
From its junction with Channel View for a distance of approximately 52 metres in a south easterly direction.
- 2.34 Channel View, Sandfields (North West Side)**  
From its junction with The Princess Margaret Way for a distance of approximately 32 metres in a north easterly direction.
- 2.35 Pier Way, Sandfields (Both Sides)**  
From its junction with The Princess Margaret Way for a distance of approximately 40 metres in a north easterly direction.
- 2.36 Marine Drive, Sandfields (Both Sides)**  
From its junction with The Princess Margaret Way for a distance of approximately 20 metres in a north easterly direction.
- 2.37 Bay View Car Park Access Road, Sandfields (Both Sides)**  
From its junction with The Princess Margaret Way for a distance of approximately 15 metres in a north easterly direction.
- 2.38 Western Avenue, Sandfields (Both Sides)**  
From its junction with The Princess Margaret Way for a distance of approximately 28 metres in a northerly direction.
- 2.39 Dalton Road, Sandfields (North Side)**  
From its junction with The Princess Margaret Way for a distance of approximately 54 metres in an easterly direction.
- 2.40 Dalton Road, Sandfields (South Side)**  
From its junction with The Princess Margaret Way for a distance of approximately 67 metres in an easterly direction.

- 2.41 Hotel Access Road, Sandfields (Both Sides)**  
From its junction with The Princess Margaret Way for a distance of approximately 12 metres in a north easterly direction.
- 2.42 Leisure Centre Access Road, Sandfields (Both Sides)**  
From its junction with The Princess Margaret Way for a distance of approximately 12 metres in a north easterly direction.
- 2.43 Cinema Access Road, Sandfields (Both Sides)**  
From its junction with The Princess Margaret Way for a distance of approximately 22 metres in a north easterly direction.
- 2.44 Beach Lay-by North, Sandfields (South West Side)**  
From its western junction with The Princess Margaret Way for a distance of approximately 17 metres in a south easterly direction.
- 2.45 Beach Lay-by North, Sandfields (North East Side)**  
From its western junction with The Princess Margaret Way for a distance of approximately 178 metres in a south easterly direction
- 2.46 Beach Lay-by North, Sandfields (South West Side)**  
From its eastern junction with The Princess Margaret Way for a distance of approximately 17 metres in a westerly direction.
- 2.47 Beach Lay-by South, Sandfields (South West Side)**  
From its western junction with The Princess Margaret Way for a distance of approximately 18 metres in a southerly direction.
- 2.48 Beach Lay-by South, Sandfields (North East Side)**  
From its western junction with The Princess Margaret Way for a distance of approximately 95 metres in a south easterly direction.
- 2.49 Beach Lay-by South, Sandfields (South West Side)**  
From its eastern junction with The Princess Margaret Way for a distance of approximately 16 metres in a north westerly direction.
- 2.50 Beach Access Road, Sandfields (Both Sides)**  
From its junction with The Princess Margaret Way for a distance of approximately 28 metres in a south westerly direction.

### **Schedule 3 – Pay By Phone Parking Place**

- 3.1 The Princess Margaret Way, Sandfields (East Side)**  
From a point approximately 54 metres south of its junction with Tir Morfa Road for a distance of approximately 49 metres in a southerly direction.
- 3.2 The Princess Margaret Way, Sandfields (North East Side)**  
From a point approximately 25 metres south east of its junction with Marine Drive for a distance of approximately 33 metres in a south easterly direction.

- 3.3 The Princess Margaret Way, Sandfields (North East Side)**  
From a point approximately 16 metres north west of its junction with the Hotel Access Road for a distance of approximately 83 metres in a north westerly direction.
- 3.4 The Princess Margaret Way, Sandfields (North East Side)**  
From a point approximately 9 metres south east of its junction with the Leisure Centre Access Road 60 metres in a south easterly direction.
- 3.5 The Princess Margaret Way, Sandfields (North East Side)**  
From a point approximately 30 metres north west of its junction with Channel View for a distance of 74 metres in a north westerly direction.
- 3.6 The Princess Margaret Way, Sandfields (North East Side)**  
From a point approximately 52 metres south east of its junction with Channel View for a distance of approximately 66 metres in a south easterly direction.
- 3.7 The Princess Margaret Way, Sandfields (South West Side)**  
From a point approximately 217 metres north west of its junction with the western exit of Beach Lay-by North for a distance of approximately 46 metres in a north westerly direction.
- 3.8 The Princess Margaret Way, Sandfields (South West Side)**  
From a point approximately 90 metres north west of its junction with the western exit of Beach Lay-by North for a distance of approximately 47 metres in a north westerly direction.
- 3.9 The Princess Margaret Way, Sandfields (South West Side)**  
From a point approximately 14 metres south east of its junction with the eastern entrance of Beach Lay-by North for a distance of approximately 30 metres in a south easterly direction.
- 3.10 The Princess Margaret Way, Sandfields (South West Side)**  
From a point approximately 706 metres north west of its junction with Victoria Road for a distance of approximately 103 metres in a south easterly direction.
- 3.11 The Princess Margaret Way, Sandfields (South West Side)**  
From a point approximately 489 metres north west of its junction with Victoria Road for a distance of approximately 48 metres in a south easterly direction.
- 3.12 The Princess Margaret Way, Sandfields (South West Side)**  
From a point approximately 427 metres north west of its junction with Victoria Road for a distance of approximately 74 metres in a south easterly direction.
- 3.13 The Princess Margaret Way, Sandfields (South West Side)**  
From a point approximately 271 metres north west of its junction with Victoria Road for a distance of approximately 50metres in a south easterly direction.

**3.14 Beach Lay-by North, Sandfields (South West Side)**

From a point approximately 34 metres south east of its western junction with The Princess Margaret Way for a distance of approximately 125 metres in a south easterly direction.

**3.15 Beach Lay-by South, Sandfields (South West Side)**

From a point approximately 27 metres south east of its western junction with The Princess Margaret Way for a distance of approximately 55 metres in a south easterly direction.

**Schedule 4 – Disabled Only Parking**

**4.1 Beach Lay-by North, Sandfields (South West Side)**

From a point approximately 17 metres north west of its eastern junction with The Princess Margaret Way for a distance of approximately 21 metres in a north westerly direction.

**4.2 Beach Lay-by North, Sandfields (South West Side)**

From a point approximately 17 metres south east of its western junction with The Princess Margaret Way for a distance of approximately 15 metres in a south easterly direction.

**4.3 Beach Lay-by South, Sandfields (South West Side)**

From a point approximately 18 metres south east of its western junction with The Princess Margaret Way for a distance of approximately 10 metres in a south easterly direction.

**4.4 Beach Lay-by South, Sandfields (South West Side)**

From a point approximately 16 metres north west of its eastern junction with The Princess Margaret Way for a distance of approximately 15 metres in a north westerly direction.

**4.5 The Princess Margaret Way, Sandfields (South West Side)**

From a point approximately 740 metres north west of its junction with Victoria Road for a distance of approximately 34 metres in a south easterly direction.

**DATED 20<sup>th</sup> MARCH 2025**

**M C GRIFFITHS**

**HEAD OF LEGAL AND DEMOCRATIC SERVICES**

**NEATH PORT TALBOT COUNTY BOROUGH COUNCIL**  
**CYNGOR BWRDEISTREF SIROL CASTELL-NEDD PORT TALBOT**

**(ABERAVON SEAFRONT)**

**(REVOCAATION) (PROHIBITION OF WAITING, LOADING AND UNLOADING AT ANY TIME) (PAY BY PHONE PARKING PLACE) AND (DISABLED BADGE HOLDERS)**

**ORDER 2025**

The Neath Port Talbot County Borough Council in exercise of its powers under Sections 1, 2, 32, 45 and Part IV of Schedule 9 of the Road Traffic Regulation Act 1984 (hereinafter referred to as “the Act of 1984”) and of all other powers them enabling and after consultation with the Chief Officer of Police in accordance with Part III of Schedule 9 of the Act of 1984 hereby make the following Order:-

1. This Order shall come into operation on the 1<sup>st</sup> day of April 2025 and may be cited as the “Neath Port Talbot County Borough Council (Aberavon Seafront) (Revocation) (Prohibition of Waiting, Loading and Unloading at any Time) (Limited Waiting) and (Disabled Badge Holders) Order 2025”.

2. (1) In this Order –

“Disabled Parking Space” means a parking bay or area provided by the Council in a parking place for the exclusive use of vehicles driven by or used for the carriage of disabled persons and who are the holders of Disabled Persons Badges, such bays or areas being marked as such;

“Disabled Person’s Vehicle” has the same meaning as in The Local Authorities’ Traffic Orders (Exemptions for Disabled Persons) (Wales) Regulations 2000;

“Disabled Person’s Badge” has the same meaning as in The Disabled Person’s (Badges for Motor Vehicles) (Wales) (Amended) Regulations 2000;

“Relevant Position” has the same meaning as in the Disabled Persons (Badges for Motor Vehicles) (Wales) (Amended) Regulations 2000”;

“Public Service Vehicle” shall have the same meaning as in Section 1 of the Public Passenger Vehicles Act 1981 and “local service” shall have the same meaning as in Section 1 of the Transport Act 1985;

“Universal Providers” means those operators of postal services who are licensed to provide all or part of a Universal Postal Service under the provisions contained in the Postal Services Act 2000.

“Parking Places” means any of those lengths of sides of roads designated as parking places for vehicles as set out in Schedule 2 to this Order. Each Parking Place is a separate distinct Parking Place in its own right and is identified for the purposes of paying a Parking Charge by its own unique identification number.

“Parking Charge” means a payment made to the Local Authority in respect of a specific Parking Place which authorises a specific vehicle to park in that specific Parking Place. The amount of the charge, the duration of the authorisation to park a specific vehicle in that specific Parking Place and the method of paying the Parking Charge are set out in the traffic signs situated at each specific Parking Place.

- (2) Except where otherwise stated, any reference in this Order to a numbered Article or Schedule is a reference to the Article or Schedule bearing that number in this Order.
  - (3) The Interpretation Act 1978 shall apply for the interpretation of this Order as it applies for the Interpretation of an Act of Parliament.
3. The (Aberavon Seafront) (Prohibition of Waiting, Loading and Unloading At Any Time) (No Stopping Except Buses) (Limited Waiting) and (Disabled Badge Holders) Order 2018 is hereby revoked.
4. Save as provided in Articles 7 and 8 of this Order, no person except on the direction of a Police Constable in uniform or a Parking Attendant shall cause or permit any vehicle to wait, load or unload at any time on the lengths of sides of roads set out in Schedule 1 of this Order.
5.
  - (i) Save as provided in Articles 7, 8, 9 and 10 of this Order, or on the direction of a Police Constable in uniform or a Parking Attendant, no person shall between the 1<sup>st</sup> April to the 30<sup>th</sup> September in any year cause or permit any vehicle to park in any Parking Place set out in Schedule 2 of this Order between the hours of 8.00am to 8.00pm on any day.
  - (ii) The restriction in Article 5 (i) above shall not however apply to any vehicle where a Parking Charge has been paid in respect of that vehicle which authorises the vehicle to park in the Parking Place for the duration permitted under that authorisation.
  - (iii) Only one period of authorised parking will be issued by the Local Authority for a specific vehicle in respect of a specific Parking Place during the hours of 8.00am to 8.00pm on any day of the week. Once the time duration of that parking authorisation has expired, no further authorisation will be issued in respect of that specific vehicle for that specific Parking Place during that calendar day.
6. Save as provided in Articles 7 and 8 of this Order, no person except on the direction of a Police Constable in uniform or a Parking Attendant shall cause or permit any vehicle to park in the Disabled Parking Place designated in Schedule 3 to this Order unless that vehicle is a Disabled Persons Vehicle which displays in the relevant position a Disabled Persons Badge.
7. Nothing in Article 4, 5 (i) and 6 shall render it unlawful to cause or permit any vehicle to wait on the lengths of roads specified therein for so long as may be necessary to enable: -

- (A) A person to board or alight from a vehicle;
  - (B) The vehicle, if it cannot conveniently be used for such purpose in any other road, to be used in connection with any of the following operations, namely: -
    - (i) Building, industrial or demolition operations;
    - (ii) The removal of any obstruction to traffic;
    - (iii) The laying, erection, alteration or repair in or on land adjacent to the said lengths of sides of road of any sewer or any main pipe or apparatus for the supply of gas, water or electricity or any telecommunications apparatus defined in the Telecommunications Act 1984;
  - (C) The vehicle, if it cannot conveniently be used for such purpose in any other road, to be used in the service of a Local Authority or a Water Authority in pursuance of statutory powers or duties;
  - (D) The vehicle to be used by a Universal Service Provider for the purpose of delivering or collecting postal packets;
  - (E) Public Service Vehicles operating a local service when waiting at an authorised bus stop to set down or pick up passengers, or to school buses;
  - (F) The vehicle to take in petrol, oil, water or air from any garage situated on or adjacent to the said length of road.
8. The prohibitions imposed by Article 4, 5 (i) and 6 shall not apply to Police, Fire, Ambulance or other Emergency Service vehicles or to Local Authority vehicles when in pursuance of statutory duties or powers.
9. Nothing in Article 5 (i) of this Order shall render it unlawful to cause or permit a disabled person's vehicle which displays in the relevant position a disabled person's badge to wait on the lengths of sides of road referred to in the said Article.
10. Nothing in Article 5 (i) of this Order shall render it unlawful to cause or permit any vehicle to wait on the length of side of road specified therein for so long as may be necessary to enable goods to be loaded and unloaded from the vehicle.

## **SCHEDULES**

### **Schedule 1 – Prohibition of Waiting, Loading or Unloading At Any Time**

#### **1.1 Golden Avenue, Sandfields (West Side)**

From a point approximately 6 metres south west of its junction with Auburn Avenue for a distance of approximately 50 metres in a south westerly direction.

#### **1.2 Golden Avenue, Sandfields (East Side)**

From a point approximately 8 metres north of its junction with Tir Morfa Road for a distance of approximately 50 metres in a south westerly direction.

- 1.3 Scarlet Avenue, Sandfields (North East Side)**  
From its junction with Golden Avenue for a distance of approximately 22 metres in a north westerly direction.
- 1.4 Scarlet Avenue, Sandfields (South West Side)**  
From its junction with The Princess Margaret Way for a distance of approximately 55 metres in a north westerly direction.
- 1.5 Tir Morfa Road, Sandfields (Both Sides)**  
From its junction with Golden Avenue for a distance of approximately 12 metres in an easterly direction
- 1.6 The Princess Margaret Way (South West Side)**  
From its junction with Scarlet Avenue for a distance of approximately 168 metres in a south then south easterly direction.
- 1.7 The Princess Margaret Way (South West Side)**  
From a point approximately 214 metres south east of its junction with Scarlet Avenue for a distance of approximately 80 metres in a south easterly direction.
- 1.8 The Princess Margaret Way (South West Side)**  
From its junction with the western exit of Beach Lay-by North for a distance of approximately 61 metres in a north westerly direction.
- 1.9 The Princess Margaret Way (South West Side)**  
From its junction with the western exit of Beach Lay-by North to its junction with the eastern entrance of Beach Lay-by North, a distance of approximately 180 metres.
- 1.10 The Princess Margaret Way (South West Side)**  
From its junction with the eastern entrance to Beach Lay-by North for a distance of approximately 14 metres in a south easterly direction.
- 1.11 The Princess Margaret Way (South West Side)**  
From a point approximately 44 metres south east of its junction with the eastern entrance of Beach Lay-by North for a distance of approximately 135 metres in a south easterly direction.
- 1.12 The Princess Margaret Way (South West Side)**  
From its junction with the western exit of Beach Lay-by South to its junction with the eastern entrance of Beach Lay-by South, a distance of approximately 94 metres.
- 1.13 The Princess Margaret Way (South West Side)**  
From its junction with the eastern entrance of Beach Lay-by South for a distance of approximately 54 metres in a south easterly then southerly direction.
- 1.14 The Princess Margaret Way (South West Side)**  
From its junction with the Beach Access Road for a distance of approximately 171 metres in an easterly then south easterly direction.
- 1.15 The Princess Margaret Way (South West Side)**

From a point approximately 560 metres north west of its junction with Victoria Road for a distance of approximately 67 metres in a south easterly direction.

**1.16 The Princess Margaret Way (South West Side)**

From a point approximately 448 metres north west of its junction with Victoria Road for a distance of approximately 6 metres in a south easterly direction.

**1.17 The Princess Margaret Way (South West Side)**

From a point approximately 358 metres north west of its junction with Victoria Road for a distance of approximately 82 metres in a south easterly direction.

**1.18 The Princess Margaret Way, Sandfields (North East Side)**

From its junction with Golden Avenue for a distance of approximately 24 metres in a southerly direction.

**1.19 The Princess Margaret Way, Sandfields (North East Side)**

From a point approximately 104 metres south of its junction with Tir Morfa Road for a distance of approximately 250 metres in a south easterly direction.

**1.20 The Princess Margaret Way, Sandfields (North East Side)**

From its junction with Pier Way for a distance of approximately 126 metres in a north westerly direction.

**1.21 The Princess Margaret Way, Sandfields (North East Side)**

From its junction with Pier Way to its junction with Marine Drive, a distance of approximately 174 metres.

**1.22 The Princess Margaret Way, Sandfields (North East Side)**

From its junction with Marine Drive for a distance of approximately 25 metres in a south easterly direction.

**1.23 The Princess Margaret Way, Sandfields (North East Side)**

From a point approximately 58 metres south east of its junction with Marine Drive for a distance of approximately 60 metres in a south easterly direction.

**1.24 The Princess Margaret Way, Sandfields (North East Side)**

From a point approximately 167 metres south east of its junction with Marine Drive for a distance of approximately 71 metres in a south easterly direction.

**1.25 The Princess Margaret Way, Sandfields (North East Side)**

From its junction with Western Avenue for a distance of approximately 60m in a south west then north westerly direction.

**1.26 The Princess Margaret Way, Sandfields (North East Side)**

From its junction with Western Avenue to its junction with Dalton Road, a distance of approximately 20 metres.

**1.27 The Princess Margaret Way, Sandfields (North East Side)**

From its junction of Dalton Road for a distance of approximately 68 metres in a south then south easterly direction.

- 1.28 The Princess Margaret Way, Sandfields (North East Side)**  
From its junction with the Hotel Access Road for a distance of approximately 16 metres in a north westerly direction.
- 1.29 The Princess Margaret Way, Sandfields (North East Side)**  
From its junction with the Hotel Access Road for a distance of approximately 52 metres in a south easterly direction.
- 1.30 The Princess Margaret Way, Sandfields (North East Side)**  
From its junction with the Cinema Access Road for a distance of approximately 42 metres in a north westerly direction.
- 1.31 The Princess Margaret Way, Sandfields (North East Side)**  
From its junction with the Cinema Access Road for a distance of approximately 69 metres in a south easterly direction.
- 1.32 The Princess Margaret Way, Sandfields (North East Side)**  
From its junction with Channel View for a distance of approximately 30 metres in a north westerly direction.
- 1.33 The Princess Margaret Way, Sandfields (North East Side)**  
From its junction with Channel View for a distance of approximately 52 metres in a south easterly direction.
- 1.34 Channel View, Sandfields (North West Side)**  
From its junction with The Princess Margaret Way for a distance of approximately 32 metres in a north easterly direction.
- 1.35 Pier Way, Sandfields (Both Sides)**  
From its junction with The Princess Margaret Way for a distance of approximately 40 metres in a north easterly direction.
- 1.36 Marine Drive, Sandfields (Both Sides)**  
From its junction with The Princess Margaret Way for a distance of approximately 20 metres in a north easterly direction.
- 1.37 Bay View Car Park Access Road, Sandfields (Both Sides)**  
From its junction with The Princess Margaret Way for a distance of approximately 15 metres in a north easterly direction.
- 1.38 Western Avenue, Sandfields (Both Sides)**  
From its junction with The Princess Margaret Way for a distance of approximately 28 metres in a northerly direction.
- 1.39 Dalton Road, Sandfields (North Side)**  
From its junction with The Princess Margaret Way for a distance of approximately 54 metres in an easterly direction.
- 1.40 Dalton Road, Sandfields (South Side)**  
From its junction with The Princess Margaret Way for a distance of approximately 67 metres in an easterly direction.

- 1.41 Hotel Access Road, Sandfields (Both Sides)**  
From its junction with The Princess Margaret Way for a distance of approximately 12 metres in a north easterly direction.
- 1.42 Leisure Centre Access Road, Sandfields (Both Sides)**  
From its junction with The Princess Margaret Way for a distance of approximately 12 metres in a north easterly direction.
- 1.43 Cinema Access Road, Sandfields (Both Sides)**  
From its junction with The Princess Margaret Way for a distance of approximately 22 metres in a north easterly direction.
- 1.44 Beach Lay-by North, Sandfields (South West Side)**  
From its western junction with The Princess Margaret Way for a distance of approximately 17 metres in a south easterly direction.
- 1.45 Beach Lay-by North, Sandfields (North East Side)**  
From its western junction with The Princess Margaret Way for a distance of approximately 178 metres in a south easterly direction
- 1.46 Beach Lay-by North, Sandfields (South West Side)**  
From its eastern junction with The Princess Margaret Way for a distance of approximately 17 metres in a westerly direction.
- 1.47 Beach Lay-by South, Sandfields (South West Side)**  
From its western junction with The Princess Margaret Way for a distance of approximately 18 metres in a southerly direction.
- 1.48 Beach Lay-by South, Sandfields (North East Side)**  
From its western junction with The Princess Margaret Way for a distance of approximately 95 metres in a south easterly direction.
- 1.49 Beach Lay-by South, Sandfields (South West Side)**  
From its eastern junction with The Princess Margaret Way for a distance of approximately 16 metres in a north westerly direction.
- 1.50 Beach Access Road, Sandfields (Both Sides)**  
From its junction with The Princess Margaret Way for a distance of approximately 28 metres in a south westerly direction.

## **Schedule 2 – Pay by Phone Parking Place**

- 2.1 The Princess Margaret Way, Sandfields (East Side)**  
From a point approximately 54 metres south of its junction with Tir Morfa Road for a distance of approximately 49 metres in a southerly direction.
- 2.2 The Princess Margaret Way, Sandfields (North East Side)**  
From a point approximately 25 metres south east of its junction with Marine Drive for a distance of approximately 33 metres in a south easterly direction.

- 2.3 The Princess Margaret Way, Sandfields (North East Side)**  
From a point approximately 16 metres north west of its junction with the Hotel Access Road for a distance of approximately 83 metres in a north westerly direction.
- 2.4 The Princess Margaret Way, Sandfields (North East Side)**  
From a point approximately 9 metres south east of its junction with the Leisure Centre Access Road 60 metres in a south easterly direction.
- 2.5 The Princess Margaret Way, Sandfields (North East Side)**  
From a point approximately 30 metres north west of its junction with Channel View for a distance of 74 metres in a north westerly direction.
- 2.6 The Princess Margaret Way, Sandfields (North East Side)**  
From a point approximately 52 metres south east of its junction with Channel View for a distance of approximately 66 metres in a south easterly direction.
- 2.7 The Princess Margaret Way, Sandfields (South West Side)**  
From a point approximately 217 metres north west of its junction with the western exit of Beach Lay-by North for a distance of approximately 46 metres in a north westerly direction.
- 2.8 The Princess Margaret Way, Sandfields (South West Side)**  
From a point approximately 90 metres north west of its junction with the western exit of Beach Lay-by North for a distance of approximately 47 metres in a north westerly direction.
- 2.9 The Princess Margaret Way, Sandfields (South West Side)**  
From a point approximately 14 metres south east of its junction with the eastern entrance of Beach Lay-by North for a distance of approximately 30 metres in a south easterly direction.
- 2.10 The Princess Margaret Way, Sandfields (South West Side)**  
From a point approximately 706 metres north west of its junction with Victoria Road for a distance of approximately 103 metres in a south easterly direction.
- 2.11 The Princess Margaret Way, Sandfields (South West Side)**  
From a point approximately 489 metres north west of its junction with Victoria Road for a distance of approximately 48 metres in a south easterly direction.
- 2.12 The Princess Margaret Way, Sandfields (South West Side)**  
From a point approximately 427 metres north west of its junction with Victoria Road for a distance of approximately 74 metres in a south easterly direction.
- 2.13 The Princess Margaret Way, Sandfields (South West Side)**  
From a point approximately 271 metres north west of its junction with Victoria Road for a distance of approximately 50metres in a south easterly direction.
- 2.14 Beach Lay-by North, Sandfields (South West Side)**  
From a point approximately 34 metres south east of its western junction with The Princess Margaret Way for a distance of approximately 125 metres in a south easterly direction.

**2.15 Beach Lay-by South, Sandfields (South West Side)**

From a point approximately 27 metres south east of its western junction with The Princess Margaret Way for a distance of approximately 55 metres in a south easterly direction.

**Schedule 3 – Disabled Only Parking**

**3.1 Beach Lay-by North, Sandfields (South West Side)**

From a point approximately 17 metres north west of its eastern junction with The Princess Margaret Way for a distance of approximately 21 metres in a north westerly direction.

**3.2 Beach Lay-by North, Sandfields (South West Side)**

From a point approximately 17 metres south east of its western junction with The Princess Margaret Way for a distance of approximately 15 metres in a south easterly direction.

**3.3 Beach Lay-by South, Sandfields (South West Side)**

From a point approximately 18 metres south east of its western junction with The Princess Margaret Way for a distance of approximately 10 metres in a south easterly direction.

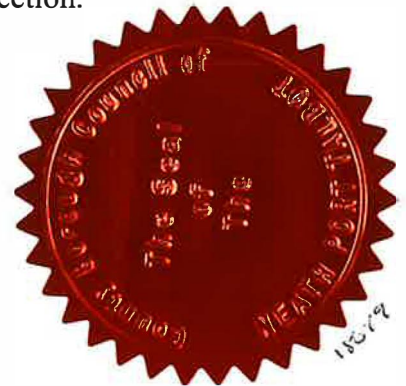
**3.4 Beach Lay-by South, Sandfields (South West Side)**

From a point approximately 16 metres north west of its eastern junction with The Princess Margaret Way for a distance of approximately 15 metres in a north westerly direction.

**3.5 The Princess Margaret Way, Sandfields (South West Side)**

From a point approximately 740 metres north west of its junction with Victoria Road for a distance of approximately 34 metres in a south easterly direction.

THE COMMON SEAL of )  
THE COUNCIL was hereunto )  
affixed on this 17<sup>th</sup> day of )  
March 2025 in the presence of: )  
-



*M. C. R. M.*

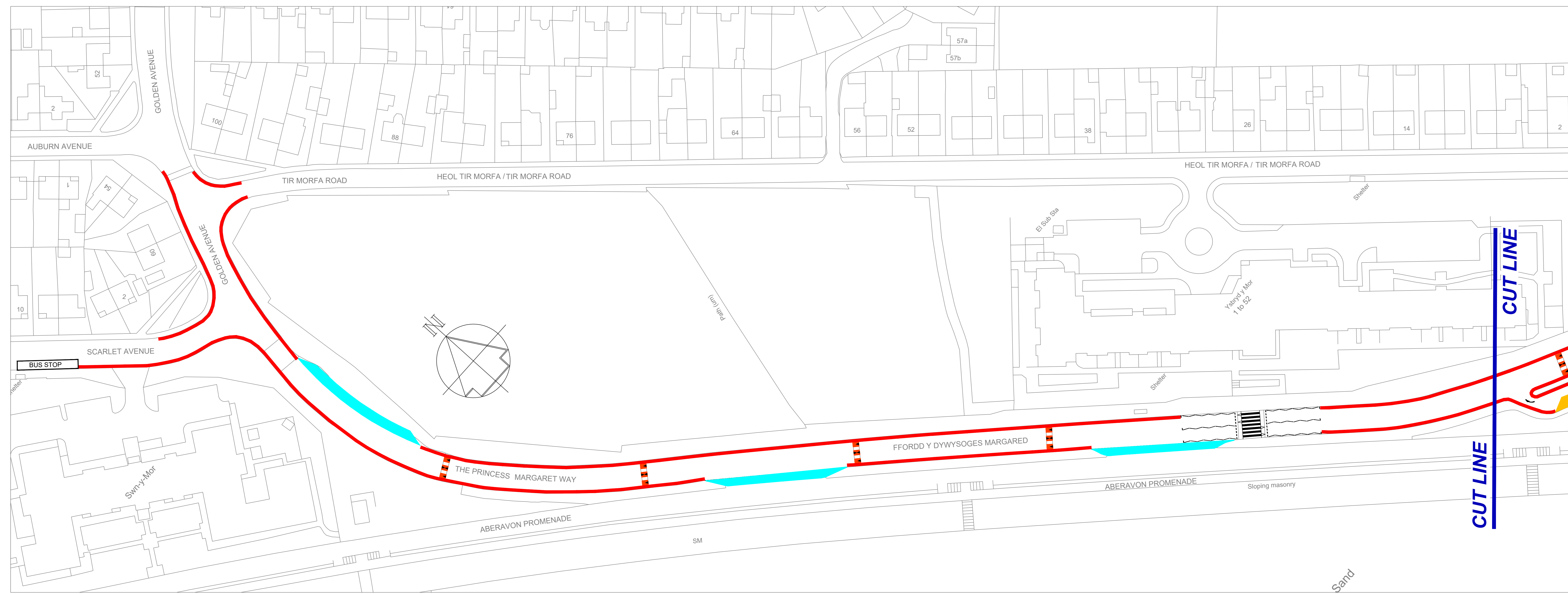
**PROPER OFFICER**

NOTES

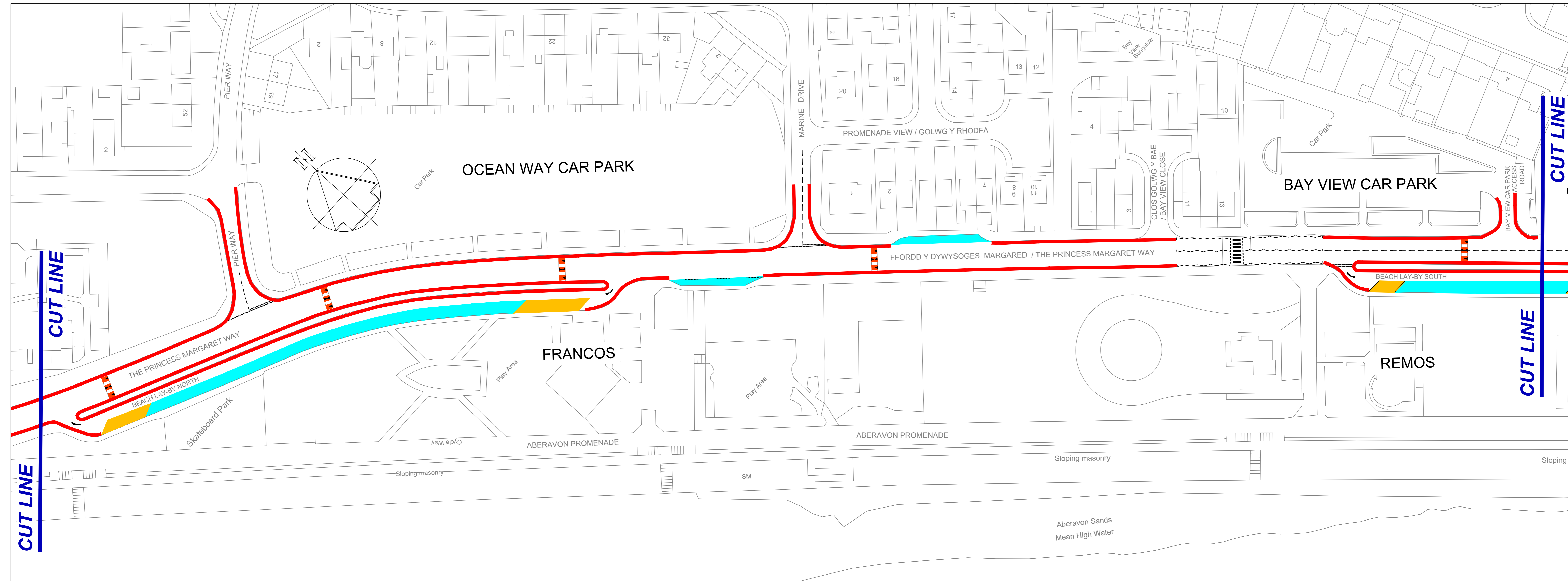
1. All dimensions are in millimetres unless otherwise stated.

Key:-

- Proposed No Waiting, Loading Unloading At Any Time Order
- Proposed Limited Waiting April 1st - Sept 30th, 8am-8pm Maximum Stay 2 hours
- Proposed Disabled Bay 24 Hours a Day, 7 Days a Week



ABERAVON SEAFRONT TRAFFIC REGULATIONS ORDERS 2024 - LAYOUT PLAN SCALE 1:500@A0



ABERAVON SEAFRONT TRAFFIC REGULATIONS ORDERS 2024 - LAYOUT PLAN SCALE 1:500@A0

Rev	Details	Dr	Ch	Ap	Date

Client

Cyngor Castell-meddi Port Talbot  
 Neath Port Talbot Council  
 ENGINEERING AND TRANSPORT  
 NICOLA PEARCE BSC (Hons), Dip TP, MRTPI  
 DIRECTOR OF ENVIRONMENT AND REGENERATION  
 THE QUAYS, BRUNEL WAY  
 BAGLAN ENERGY PARK  
 NEATH SA11 2GG

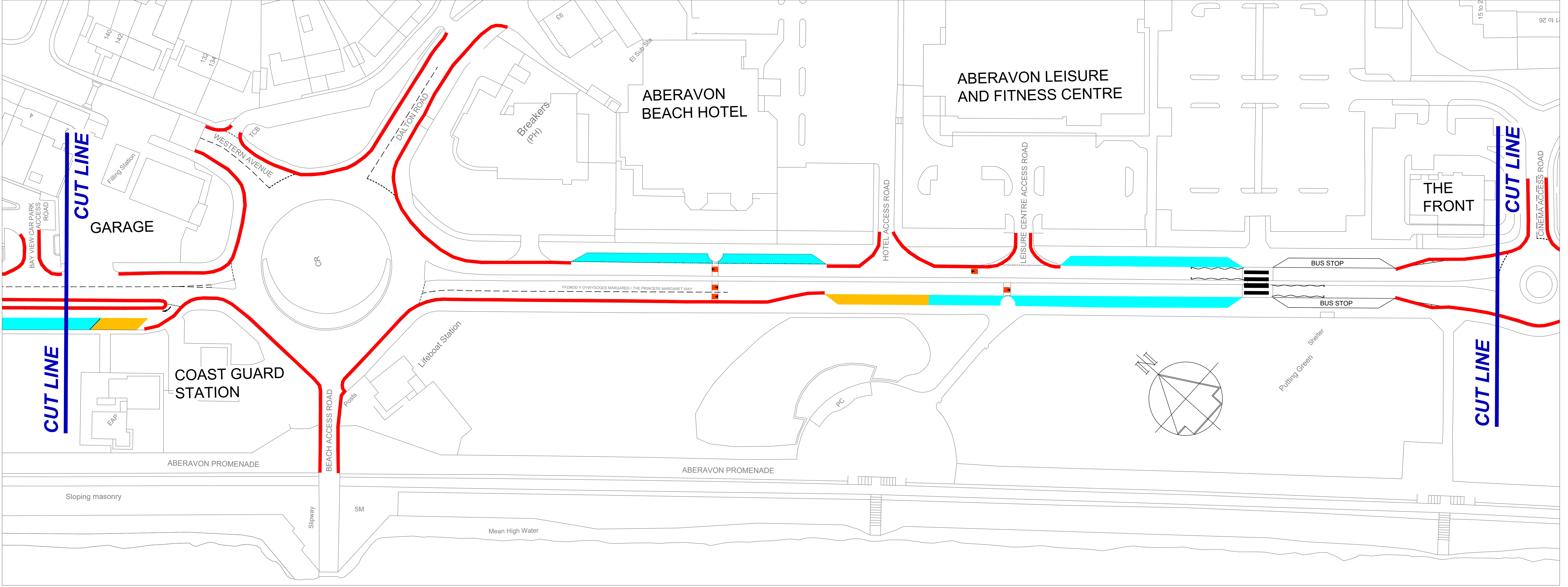
Job Title

ABERAVON SEAFRONT  
 SANDFIELDS  
 PORT TALBOT  
 TRAFFIC REGULATION ORDERS  
 SHEET 1 OF 2

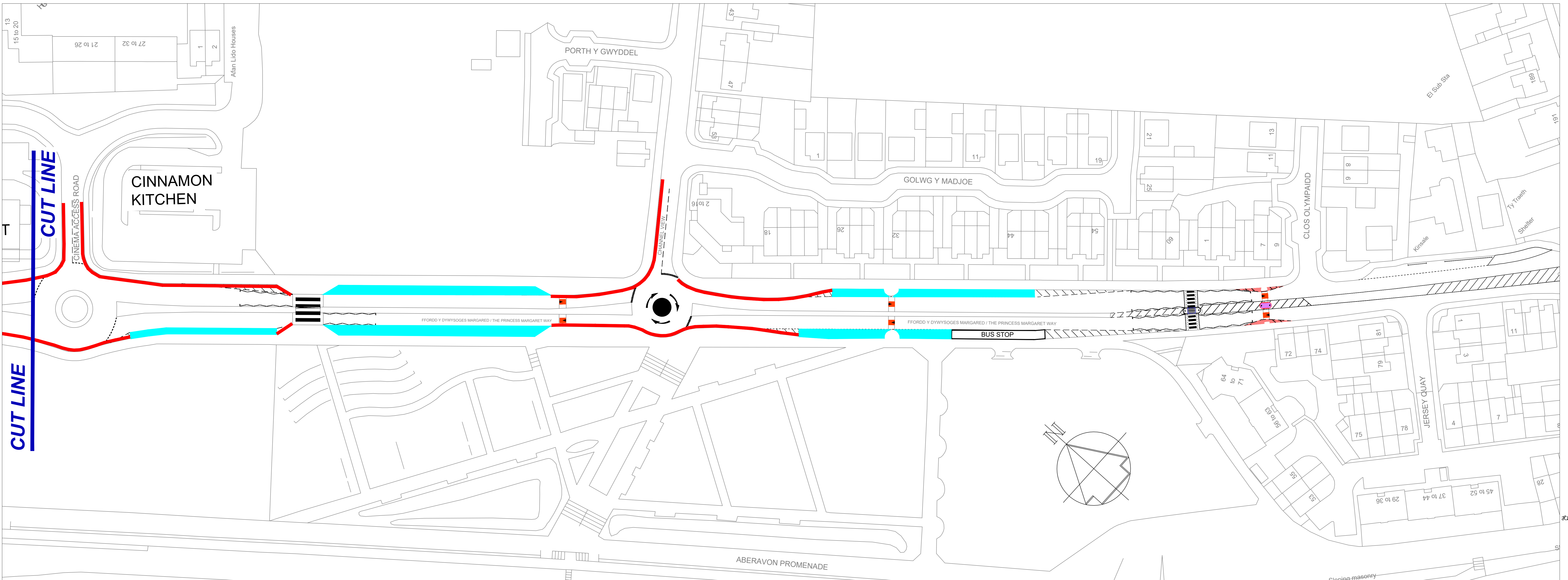
File No.	Financial Code No.
Drawn JCD	Checked MCB
Date APR 24	Date APR 24
Scales AS SHOWN	Status PRELIM
Drawn No.	AS / TRO 2024 / SHEET 1

Dwg. No.

Job Title



ABERAVON SEAFRONT TRAFFIC REGULATIONS ORDERS 2024 - LAYOUT PLAN SCALE 1:500@A0



ABERAVON SEAFRONT TRAFFIC REGULATIONS ORDERS 2024 - LAYOUT PLAN SCALE 1:500@A0

**NOTES**

1. All dimensions are in millimetres unless otherwise stated.

**Key:-**

- Proposed No Waiting, Loading Unloading At Any Time Order
- Proposed Limited Waiting April 1st - Sept 30th, 8am-8pm Maximum Stay 2 hours
- Proposed Disabled Bay 24 Hours a Day, 7 Days a Week

Rev	Details	Dr	Ch	Ap	Date

**Cyngor Castell-medd Port Talbot**  
Neath Port Talbot Council

ENGINEERING AND TRANSPORT  
NICOLA PEARCE BSC (Hons), Dip TP, MRTPI  
DIRECTOR OF ENVIRONMENT AND REGENERATION  
THE QUAYS, BRUNEL WAY  
BAGLAN ENERGY PARK  
NEATH SA11 2SS

Job Title: **ABERAVON SEAFRONT SANDFIELDS PORT TALBOT TRAFFIC REGULATION ORDERS**

SHEET 2 OF 2

File No.	Financial Code No.	Drawn	JCD	Checked	MCB	Approved	H11
Date	APR 24	Date	APR 24	Date	APR 24	Date	APR 24
Scales	AS SHOWN	Status	PRELIM				
Drawing No.	AS / TRO 2024 / SHEET 2						

Dwg. No.

Job Title