

NEATH PORT TALBOT COUNTY BOROUGH COUNCIL
CYNGOR BWRDEISTREF SIROL CASTELL-NEDD PORT TALBOT

(B4242 YNYSYGERWN TO GLYNNEATH)
(30 MPH AND 40 MPH SPEED LIMITS)

ORDER 2026

NOTICE is given that the Council on the 5th January 2026 made an Order in pursuance of its powers as contained in Section 84 and Part IV of Schedule 9 of the Road Traffic Regulation Act 1984 the effect of which is as set out in the Schedule below.

A copy of the Order and plan can be inspected on the Council's Internet Website <https://www.npt.gov.uk/traffic-regulation-orders-tros>

The Order will come into force on the 16th January 2026.

If any person wishes to question the validity of the Order or of any of its powers on the grounds that it or they are not within the powers conferred by the Act or that any requirements of the Act or of any instrument made under the Act has not been complied with, that person may, within 6 weeks from the date on which the Order is made, apply for that purpose to the High Court.

Schedule 1 – Revocation

- 1.1** To revoke the existing speed limits in so far as they relate to the length and sides of the roads set out in Schedule 2 of this order.

Schedule 2 – 40MPH Speed Limit

2.1 B4242 Aberdulais to Abergarwed

From a point approximately 740 metres north east of its junction with Main Road for a distance of approximately 2400 metres in a north easterly direction.

2.2 B4242 Neath Road, Abergarwed

From a point approximately 300 metres south west of its junction with Riverside View for a distance of approximately 915 metres in a south westerly direction.

2.3 B4242 Glynneath Road, Resolven

From a point approximately 1527 metres north east of its junction with B4434 Commercial Road for a distance of approximately 1404 metres in a north easterly direction.

2.4 B4242 Glynneath Road, Glynneath

From a point approximately 160 metres south west of its south western entrance of the B4242 Lay-by, Glynneath for a distance of approximately 841 metres in a north easterly direction.

Schedule 3 – 30MPH Speed Limit

3.1 B4242 Neath Road, Abergarwed

From a point approximately 3140 metres north east of its junction with Main Road for a distance of approximately 400 metres in a north easterly direction.

3.2 B4242 Gynneath Road, Glynneath

From a point approximately 160 metres south west of its south western entrance of the B4242 Lay-by, Glynneath for a distance of approximately 400 metres in a south westerly direction.

DATED 12th JANUARY 2026

M C GRIFFITHS

CHIEF LEGAL OFFICER

NEATH PORT TALBOT COUNTY BOROUGH COUNCIL
CYNGOR BWRDEISTREF SIROL CASTELL-NEDD PORT TALBOT

B4242 YNYSYGERWN TO GLYNNEATH
(30 MPH AND 40 MPH SPEED LIMITS)
ORDER 2026

The Neath Port Talbot County Borough Council in exercise of its powers under Section 84 and Part IV of Schedule 9 of the Road Traffic Regulation Act 1984 (hereinafter referred to as “the Act of 1984”) and of all other powers it enabling and after consultation with the Chief Officer of Police in accordance with Part III of Schedule 9 of the Act of 1984 hereby makes the following Order: -

1. This Order shall come into force on the 16th day of January 2026 and may be cited as the “Neath Port Talbot County Borough Council (B4242 Ynysygerwn to Glynneath) (30 MPH and 40 MPH Speed Limits) Order 2026”.
2. In this Order –
 - (1) Except where otherwise stated, any reference in this Order to a numbered Article or Schedule is a reference to the Article or Schedule bearing that number in this Order.
 - (2) The Interpretation Act 1978 shall apply for the interpretation of this Order as it applies for the Interpretation of an Act of Parliament.
3. Any existing Speed limits and/or Speed Restriction Orders are hereby revoked in so far as they relate to the sides of lengths of roads as set out in the Schedules of this Order below.
4. No person shall cause or permit any vehicle, unless at the direction of a Police Officer in uniform, to be driven at any speeds in excess of 40 MPH on the sides of lengths of roads set out in the Schedule 1 of this Order below.
5. No person shall cause or permit any vehicle, unless at the direction of a Police Officer in uniform, to be driven at any speeds in excess of 30 MPH on the sides of lengths of roads set out in the Schedule 2 of this Order below.

SCHEDULES

Schedule 1 – Proposed 40MPH Speed Limit

1.1 B4242 Aberdulais to Abergarwed

From a point approximately 740 metres north east of its junction with Main Road for a distance of approximately 2400 metres in a north easterly direction.

1.2 B4242 Neath Road, Abergarwed

From a point approximately 300 metres south west of its junction with Riverside View for a distance of approximately 915 metres in a south westerly direction.

1.3 B4242 Glynneath Road, Resolven

From a point approximately 1527 metres north east of its junction with B4434 Commercial Road for a distance of approximately 1404 metres in a north easterly direction.

1.4 B4242 Glynneath Road, Glynneath

From a point approximately 160 metres south west of its south western entrance of the B4242 Lay-by, Glynneath for a distance of approximately 841 metres in a north easterly direction.

Schedule 2 - Proposed 30MPH Speed Limit

2.1 B4242 Neath Road, Abergarwed

From a point approximately 3140 metres north east of its junction with Main Road for a distance of approximately 400 metres in a north easterly direction.

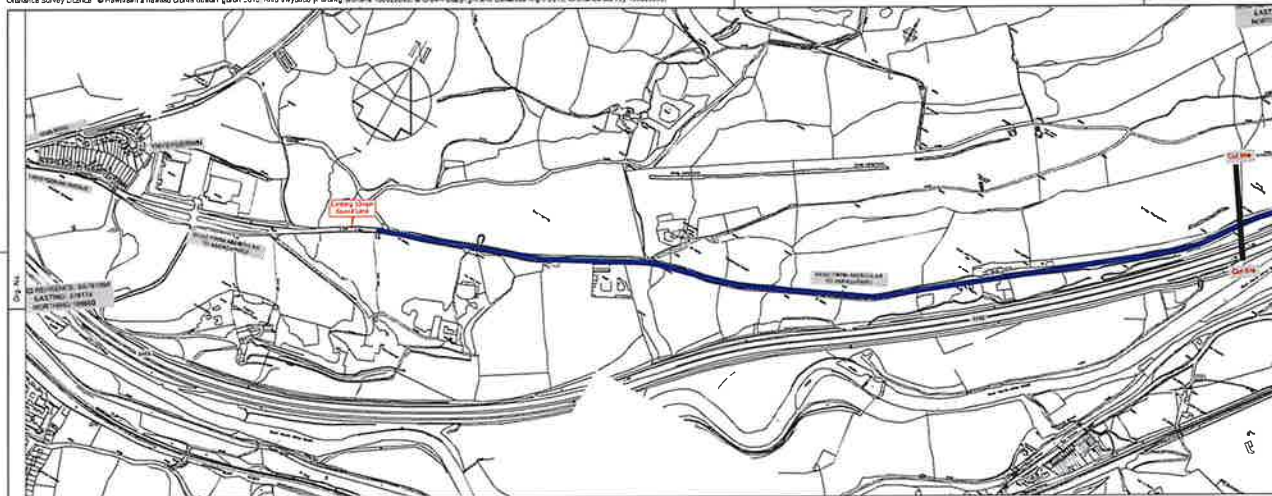
2.2 B4242 Glynneath Road, Glynneath

From a point approximately 160 metres south west of its south western entrance of the B4242 Lay-by, Glynneath for a distance of approximately 400 metres in a south westerly direction.

THE COMMON SEAL of)
THE COUNCIL was hereunto)
affixed on this 5th day of)
January 2026 in the presence of: -)

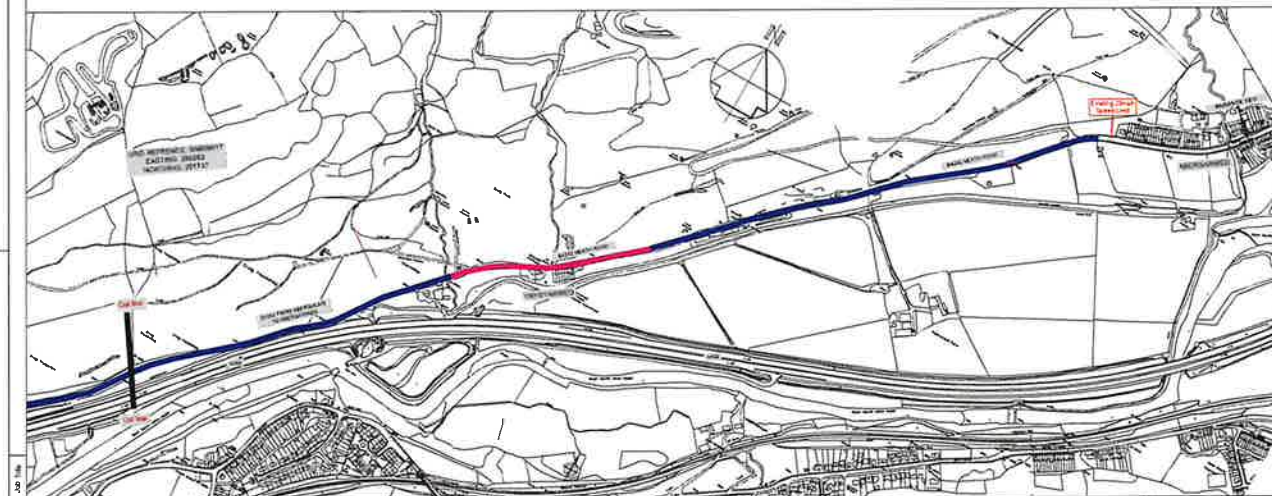


PROPER OFFICER



NOTE
1. All dimensions are in millimetres unless otherwise stated.

Key:
Proposed 30mph Speed Limit
Proposed 40mph Speed Limit



Scale 1:10,000

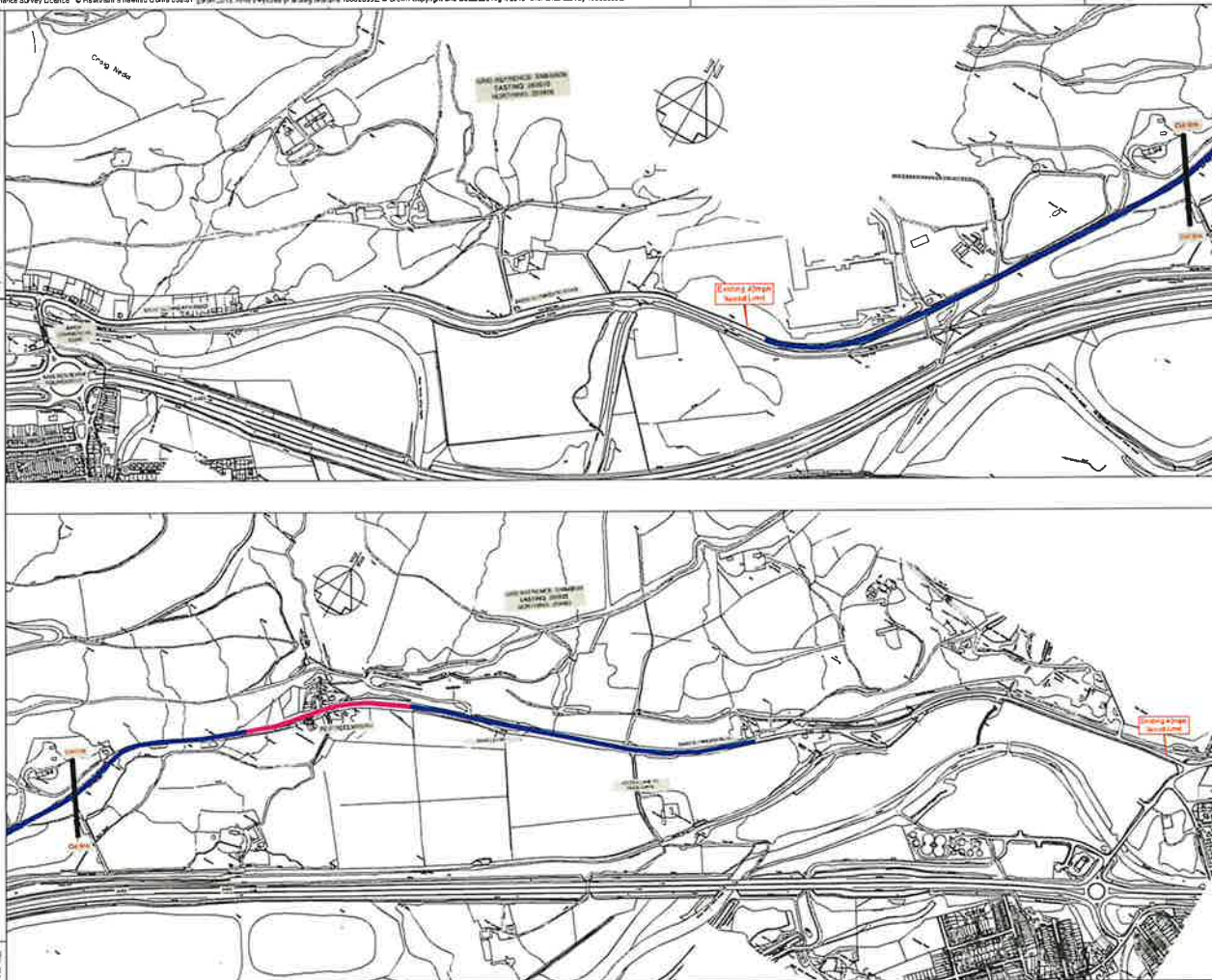
10m 20m 30m 40m

Proposed 30mph & 40mph Speed Limit
B4242 Ynysgarn to Glynneath

Drawn	2011	Checked	2011
Rev	01	Rev	01
Drawn	2011	Checked	2011
Rev	01	Rev	01

DATE: 10/11/11


RSG-B4242-TR01



NOTES

1. All dimensions are in millimetres unless otherwise stated.

Key:-

 Proposed 30mph Speed Limit
 Proposed 40mph Speed Limit

Proposed 30mph & 40mph
Speed Limit
B4242 Ynysygerwn to Glynneath

Date: FEB		Time: 14:00			
From: 30	To: 30	From: 30	To: 30	From: 30	To: 30
Day: May 26	Day: May 26	Day: May 26	Day: May 26	Day: May 26	Day: May 26
Time: 14:00	Time: 14:00	Time: 14:00	Time: 14:00	Time: 14:00	Time: 14:00
RSG-B4242-TR02					