



Greater Spearwort / Llafnlys Mawr

Glas y Dorian – Cadwch eich llygaid allan am ffach lachar las yn gwibio heibio wrth i chi gerdded ar hyd y gamlas. Gellir gweld Glas y Dorian yn hedfan ac, os ydych yn lwcus, yn clwydo ar hyd y gamlas trwy gydol y flwyddyn. Mae'n amhosib camgyrryd yr adar hyn oherwydd eu plu glas ac oren llachar.

Llafnlys Mawr – Edrchhwch am fiodau mawr melyn sgleiniog y Llafnlys Mawr rhwng mis Mehefn a mis Awst. Hwn yw'r blodau hyd at 5cm o led. Mae'n tyfu mewn ardaloedd gwlyb yn unig.

Y rhywogaethau allweddol i'w gweld:

Gwrandewch am Deloriaid yr Hesyg yn trydar a chan ffrwydroi Telor Cetti (s'n brinach) mewn rhai rhannau o'r gwely cyrs. Mae sawl math o bill-pala a gwas y neidr i'w gweld hefyd yn ystod yr haf.



Kingfisher / Glas y Dorian © Barry Stewart

Kingfisher – Keep your eyes peeled for a dazzling flash of blue flying past you as you walk along the canal. Kingfisher can be seen flying, and if you are lucky, perching, along the canal all year round. These are unmistakable due to their brilliant blue and orange plumage.

Greater Spearwort – Look out for the large glossy yellow flowers of the Greater Spearwort between June and August. This is the tallest and largest-flowered buttercup in the UK, with flowers up to 5cm wide, only found in wet areas.

Key species to see:

Listen out for the chatter of Sedge Warblers and the explosive song of the rarer Cetti's Warbler in some of the reedbed areas. Numerous butterflies and dragonflies can also be seen during the summer months.

Further Information and Contacts

For further information on accessing the countryside and public rights of way visit the countryside pages on www.npt.gov.uk/countrysideaccess or telephone **01639 686868**. For further information on the wildlife of Neath Port Talbot please visit www.npt.gov.uk/biodiversity or telephone **01639 686149**. For other places to visit in Neath Port Talbot visit www.visitnpt.co.uk

Gwybodaeth a Chysylltiadau Ychwanegol

Am fwy o wybodaeth am gael mynediad i ardaloedd gwledig ac am hawliau tramwy, ewch i dudalennau cefn gwlad ein gwefan www.npt.gov.uk/countrysideaccess neu ffoniwch **01639 686868**. Am fwy o wybodaeth am fywyd gwyllt yng Nghastell-nedd Port Talbot, ewch i www.npt.gov.uk/biodiversity neu ffoniwch **01639 686149**. I gael manylion am leoedd eraill i ymweld â hwy yng Nghastell-nedd Port Talbot, ewch i www.visitnpt.co.uk



Emperor Dragonfly / Ymerawdwr © Roger Tidman (rsfp-images.com)

Neath Port Talbot Wildlife Walks

Llwybrau Bywyd Gwyllt yng Nghastell-nedd Port Talbot



Neath Canal / Camlas Nedd



Neath Canal Wildlife Walk Llwybr Bywyd Gwyllt Camlas Nedd

This wildlife walk is an easy linear walk along the Neath Canal. Various birds and plants may be found along the route, including Southern Marsh Orchid during early summer alongside the towpath.

Taith linellol hawdd ar hyd Camlas Nedd yw'r llwybr bywyd gwyllt hwn. Mae amrywiaeth o adar a phlanhigion i'w gweld ar hyd y llwybr hwn, gan gynnwys Tegeirian Cors y De ar ddechrau'r haf ar hyd y llwybr halio.



Llywodraeth Cymru / Welsh Assembly Government



Cynor Cefn Gwlad Cymru / Countryside Council for Wales



Cyngor Castell-nedd Port Talbot

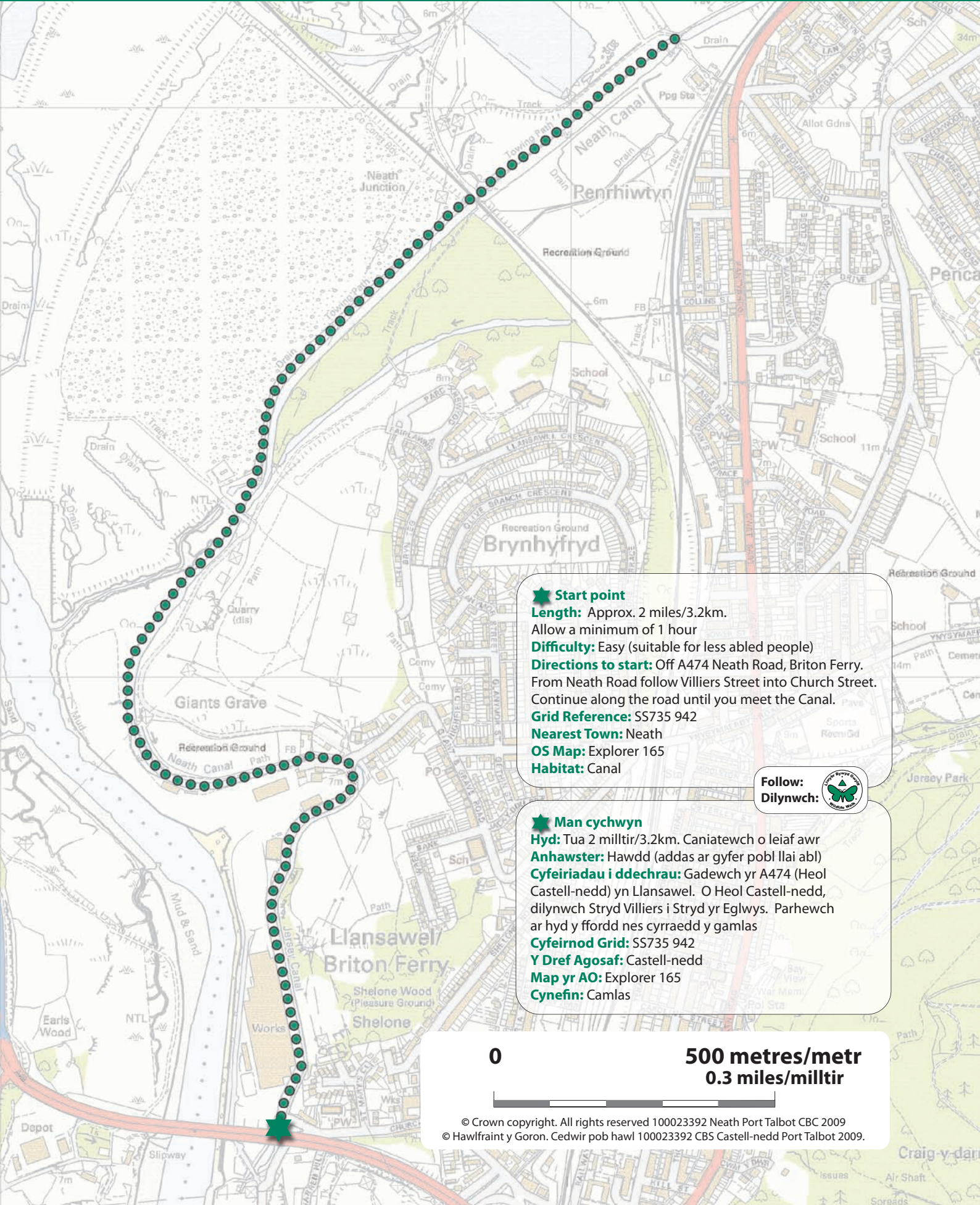


NPT Biodiversity / Biodymywieth NPT



Neath Canal Wildlife Walk

Llwybr Bywyd Gwyllt Camlas Nedd



★ Start point

Length: Approx. 2 miles/3.2km.

Allow a minimum of 1 hour

Difficulty: Easy (suitable for less abled people)

Directions to start: Off A474 Neath Road, Briton Ferry. From Neath Road follow Villiers Street into Church Street. Continue along the road until you meet the Canal.

Grid Reference: SS735 942

Nearest Town: Neath

OS Map: Explorer 165

Habitat: Canal

Follow:
Dilynwch:



★ Man cychwyn

Hyd: Tua 2 milltir/3.2km. Caniatewch o leiaf awr

Anhawster: Hawdd (addas ar gyfer pobl llai abl)

Cyfeiriadau i ddechrau: Gadewch yr A474 (Heol Castell-nedd) yn Llansawel. O Heol Castell-nedd, dilynwch Stryd Villiers i Stryd yr Eglwys. Parhewch ar hyd y ffordd nes cyrraedd y gamlas

Cyfeirnod Grid: SS735 942

Y Dref Agosaf: Castell-nedd

Map yr AO: Explorer 165

Cynefin: Camlas

0

500 metres/metr
0.3 miles/milltir